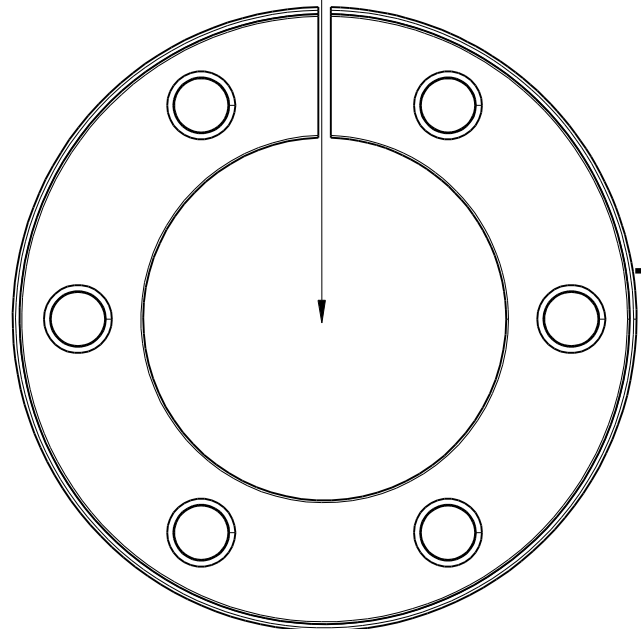
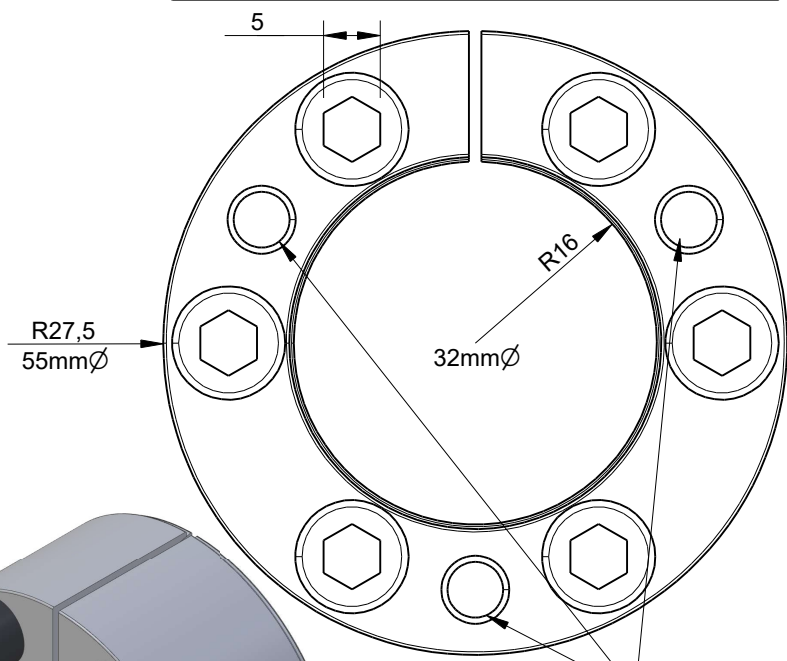
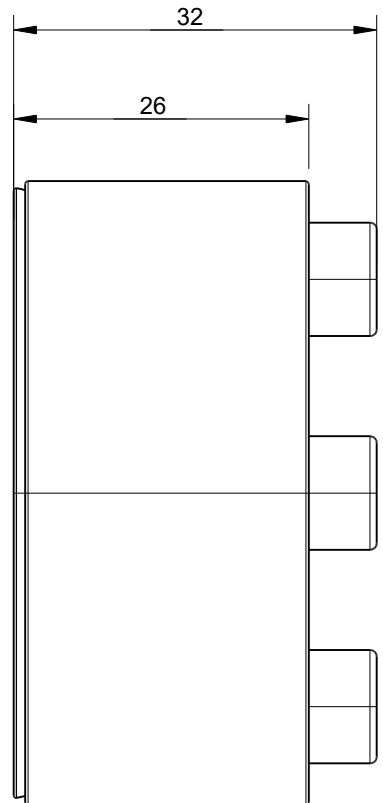
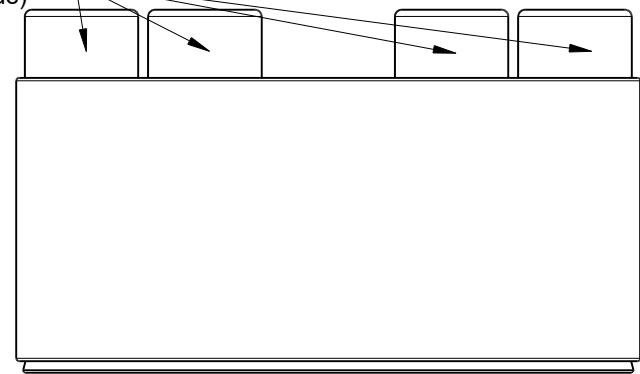


6 x m6x24 DIN912 12.9
(17Nm Tightening Torque)

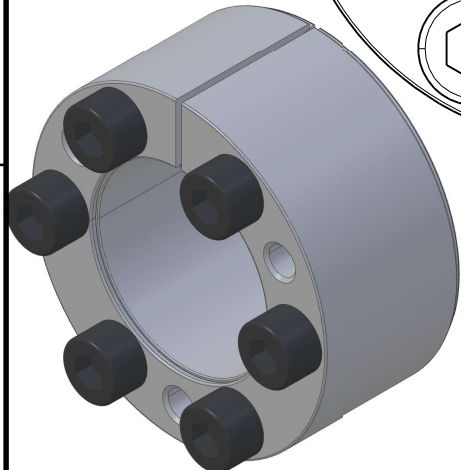
RevNo Revision note

Date Signature Checked

Maximum transferable torque 575 Nm (Mt)
Maximum transferable axial force 36 kN (Faxial)



Remove the 6 bolts, and screw 3 back in these threads to release the cone clamping



Units mm, Tolerances +/-0.1mm

Itemref	Quantity	Title/Name, designation, material, dimension etc			Article No./Reference	
Drawn by Kevin Damen	Checked by	Approved by - date	File name	Date 11-8-2023	Scale 3:2	

1617

www.damencnc.com

1617 Locking Assembly BK61 d x D x 32x55 Lt=32mm		Edition	Sheet 1 OF 1
---	--	---------	-----------------