

1

2

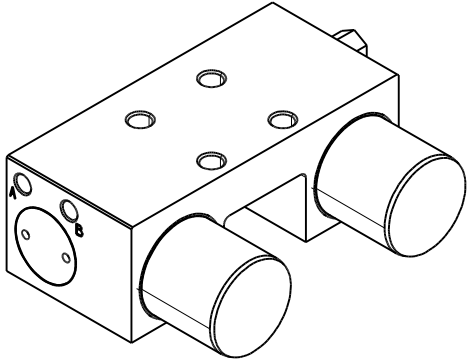
3

4

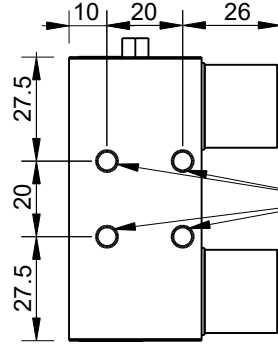
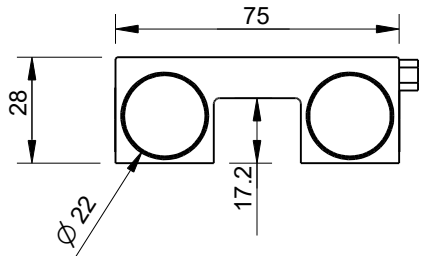
5

6

RevNo	Revision note	Date	Signature	Checked
-------	---------------	------	-----------	---------



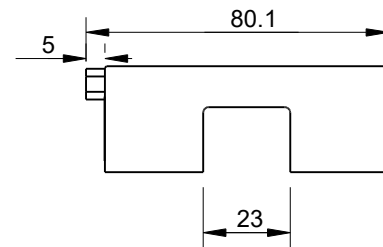
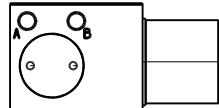
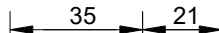
SCALE 1:1.5



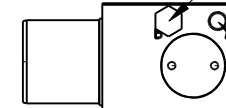
M6x1.00 Metric Coarse Thread

Use bolts with at least quality class 8.8

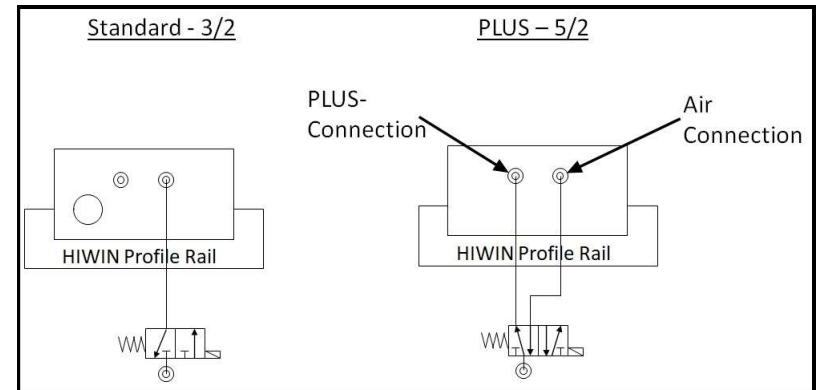
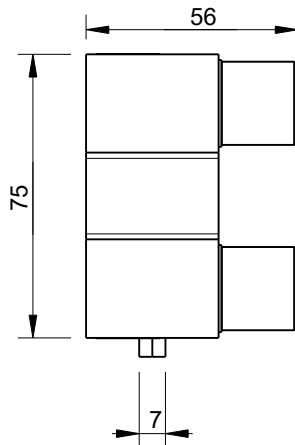
Recommended tightening torque 9.5Nm



Air Filter/ blow out port



M5 connection for 3/2 Valve



Units: mm
 Tolerances: +/-0.1mm unless otherwise specified

Technical Data	
Holding Force 3/2 valve (passive clamping)	750N
Holding force 5/2 valve (active clamping PLUS)	1400N
Installation direction	from above
Operating Pressure	6.0 (bar)
MAX Operating Pressure	6.5 (bar)
Jaw opening pressure	5.5 (bar)
Max clamping length	56mm
Type of operation (Normally open or closed)	NC
Air consumption per cycle at 6bar (3/2 / 5/2)	21/68cm ³

Itemref	Quantity	Title/Name, designation, material, dimension etc			Article No./Reference	
Drawn by Cas Jansen	Checked by Kevin Damen	Approved by - date 12-10-2020	File name	Date 6-10-2020	Scale 1:2	

3276

www.damencnc.com

3276	Edition	Sheet
Pneumatic Clamping Element MKS2501A		1 OF 1

1

2

3

4

5

6