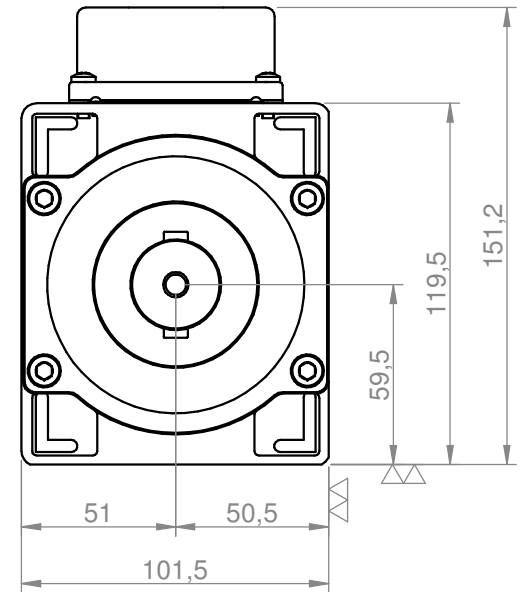
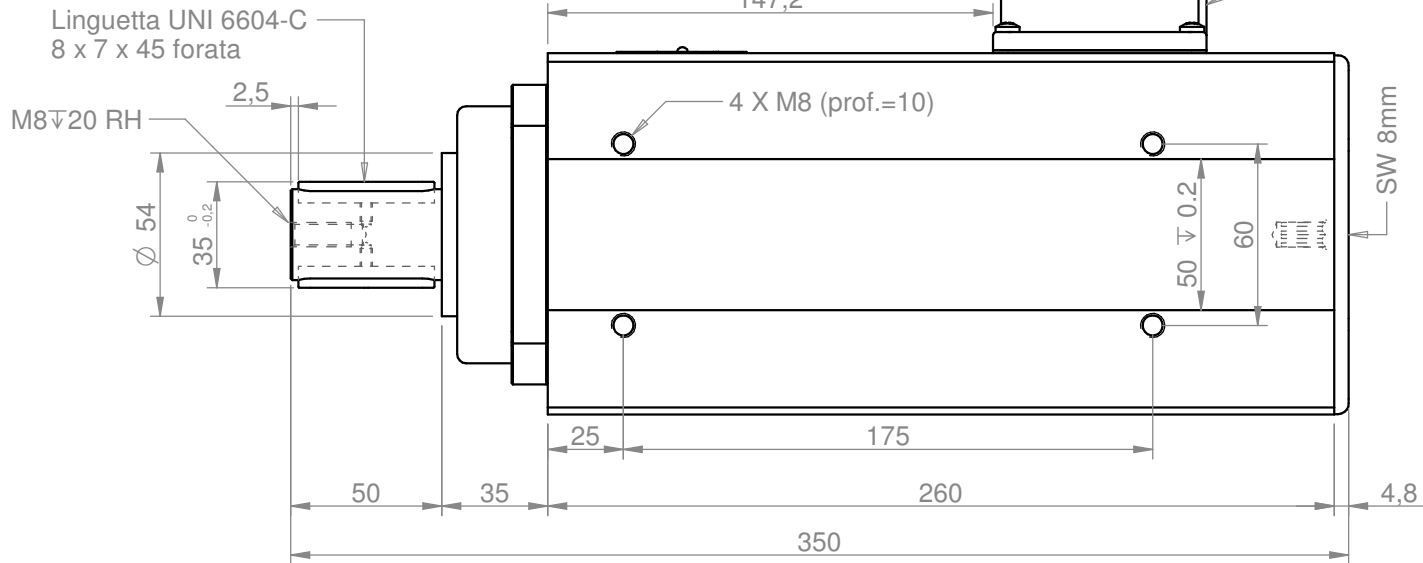
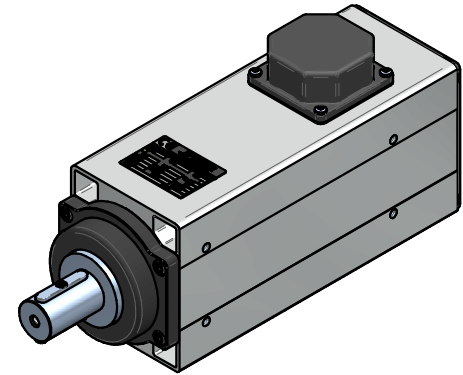
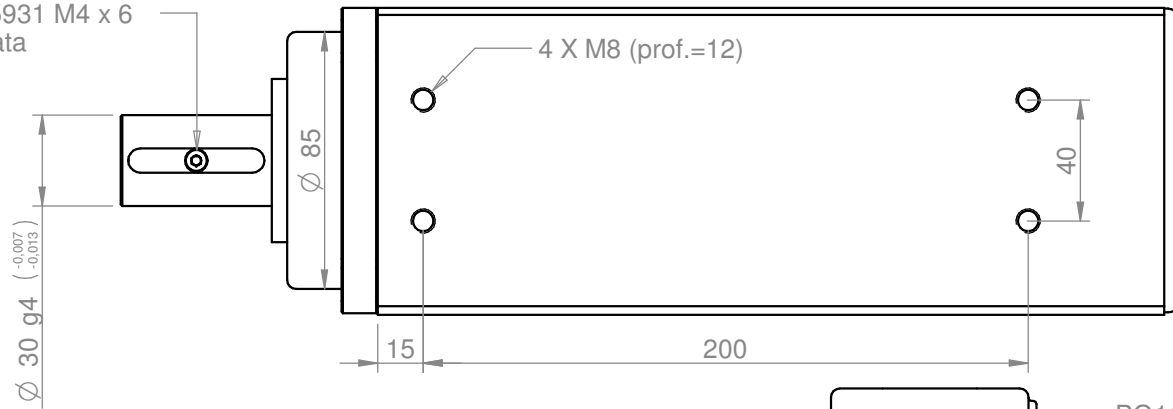

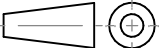


Vite TCEI UNI 5931 M4 x 6
cl. res. 8.8 zincata



Power [kW]	Duty Cycle	Base speed [rpm]	Base freq. [Hz]	Base voltage Δ [V]	Base voltage Y [V]	Protection	Ins. Cl.	 Teknomotor S.r.l. Via Argeneva 31, I-32038 Quero Vas (BL) www.teknomotor.com
3.7	S1	12000	200	220	380	IP54	F	
Min speed [rpm]		Max speed [rpm]	Max freq. [Hz]	Absorb. Δ [A]	Absorb. Y [A]	Part number on nameplate		
6000		12000	200	15.0	8.7	COM51600329		
Balancing according to ISO 1940 - G2.5 @ 12000 rpm		Balancing type		tool type	tool type	Peso / weight		
		Full Key		full key	half key	12.36 kg		
Tolleranze non quotate: UNI EN 22768 fH Smussi non quotati: 0.5mm				$\nabla = 0.8 \nabla$	$\nabla = 3.2 \nabla$	$\nabla = 12.5 \nabla$	$\sim = \nabla$	Title
								5160-D-SB-L50-FK-RH
rev. n°	description			date	signature	Customer		
00	Emissione			12/11/2014	D. Bottarel	Catalogo		
							Drawing code	
							COM51600329	
drawn - date	approved - date	checked - date	sostituisce il		foglio / sheet	scala		
D. Bottarel - 12/11/2014	S. Perli - 12/11/2014	S. Perli - 12/11/2014	sostituito dal		1 / 1	n.d.		