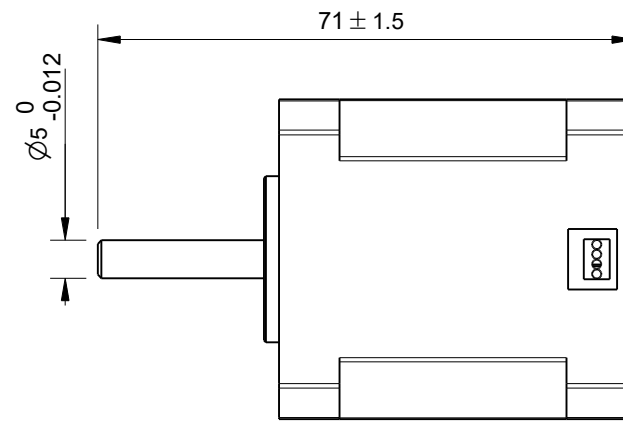
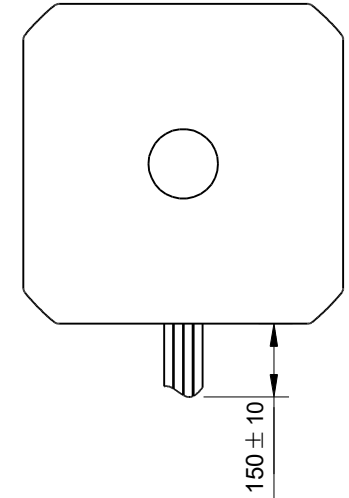
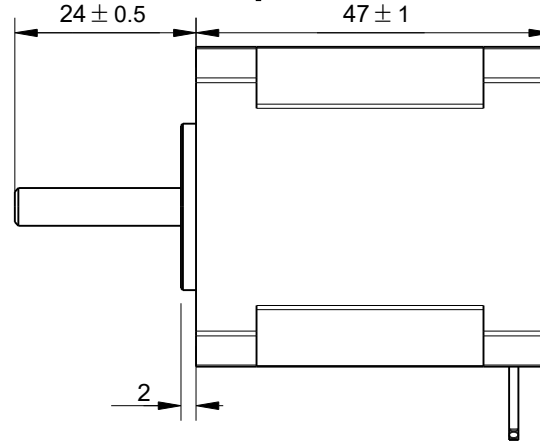
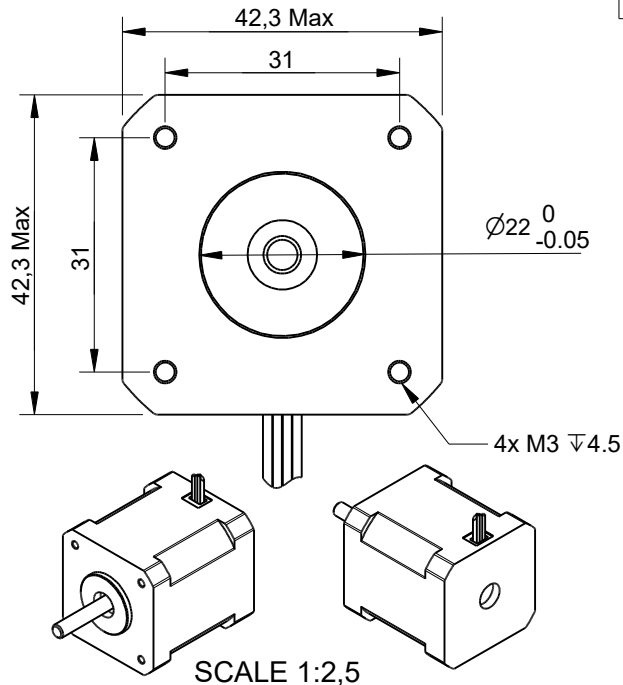


1	2	3	4	5	6
RevNo	Revision note			Date	Signature
					Checked



Wiring Colour Table

A+	Black
A-	Green
B+	Red
B-	Blue

Exciting Sequence VS Direction of rotation

STEP	A+	B+	A-	B-	CCW
1	+	+	-	-	↑
2	-	+	+	-	
3	-	-	+	+	
4	+	-	-	+	

↓ CW

Phase	2 Phase
Step angle	1.8 ± 5% °/step
Rotor Inertia	0.68x10 ⁻⁵ kgm ²
Rated Voltage	3.06 VDC
Rated Current	1.7 Amps/Phase
Resistance	1.8 ± 10% Ω/Phase
Inductance	3.2 ± 20% mH/Phase
Insulation resistance	100 MΩ Min
Holding Torque	0.52 Nm Min
Detent Torque	0.026 Nm Max
Insulation Class	B
Lead Style	AWG26 UL1007
Mass	0.36 Kg
Units	mm
Tolerances	± 0.1mm unless otherwise specified

Itemref	Quantity	Title/Name, designation, material, dimension etc			Article No./Reference	
Drawn by Cas Jansen	Checked by	Approved by - date	File name	Date 31-1-2022	Scale 1:1	
504			www.damencnc.com			
						504 Stepper Motor DCNC-NEMA17-0.5Nm