

1

2

3

4

5

6

A

B

C

D

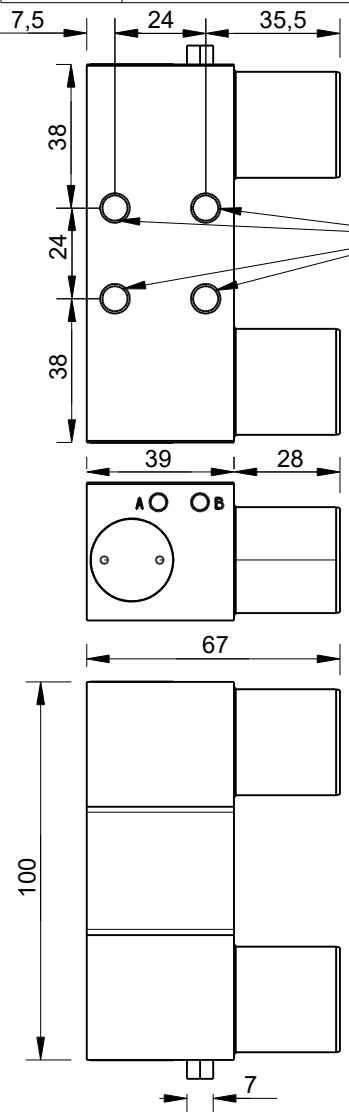
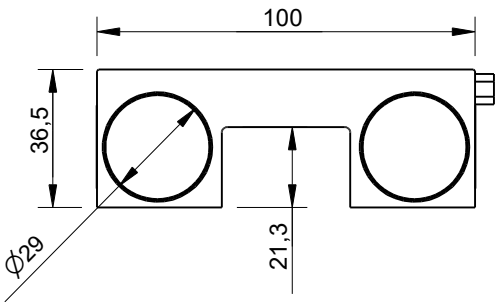
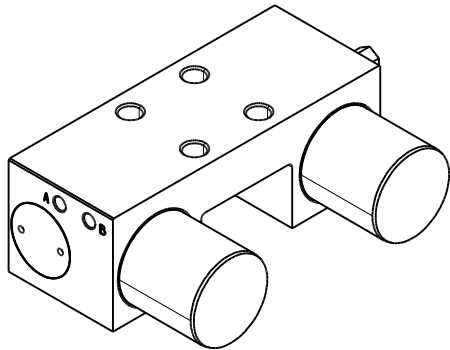
A

B

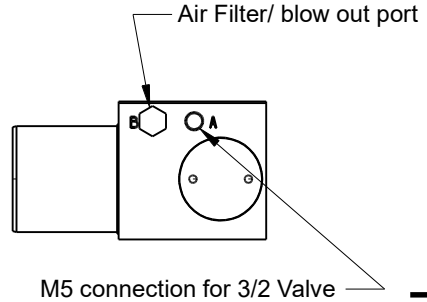
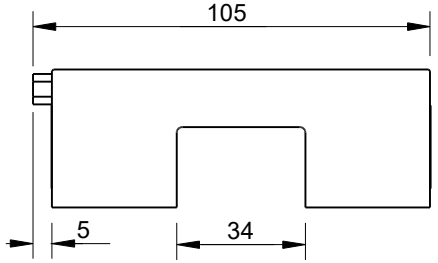
C

D

RevNo	Revision note	Date	Signature	Checked
-------	---------------	------	-----------	---------

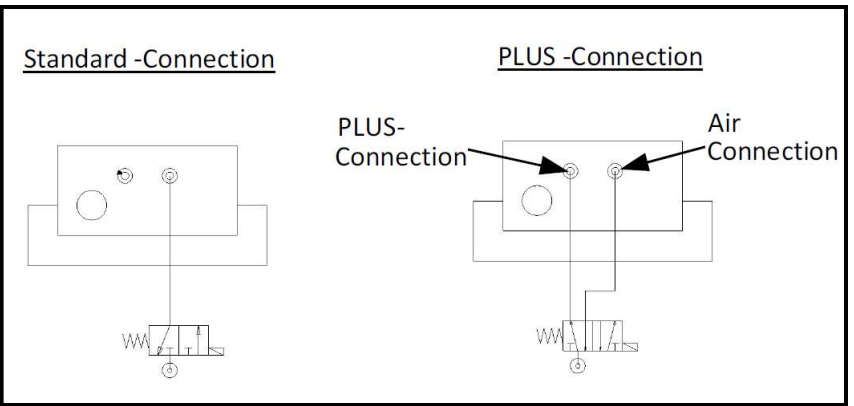


M8x1.25 Metric Coarse Thread
 Use bolts with at least quality class 8.8
 Recommended tightening torque 23Nm



Units: mm
 Tolerances: +/-0.1mm unless otherwise specified

Technical Data	
Holding Force 3/2 valve (passive clamping)	1250N
Holding force 5/2 valve (active clamping PLUS)	2200N
Installation direction	from above
Operating Pressure	6.0 (bar)
MAX Operating Pressure	6.5 (bar)
Jaw opening pressure	5.5 (bar)
Max clamping length	67mm
Type of operation (Normally open or closed)	NC
Air consumption per cycle at 6bar (3/2 / 5/2)	31/129cm ³



Itemref	Quantity	Title/Name, designation, material, dimension etc			Article No./Reference	
Drawn by Kevin Damen	Checked by Kevin Damen	Approved by - date 12-7-2023	File name	Date 12-7-2023	Scale 1:2	

5266

www.damencnc.com

5266	Pneumatic Clamping Element MKS3501A	Edition	Sheet 1 OF 1
------	-------------------------------------	---------	-----------------

1

2

3

4

5

6