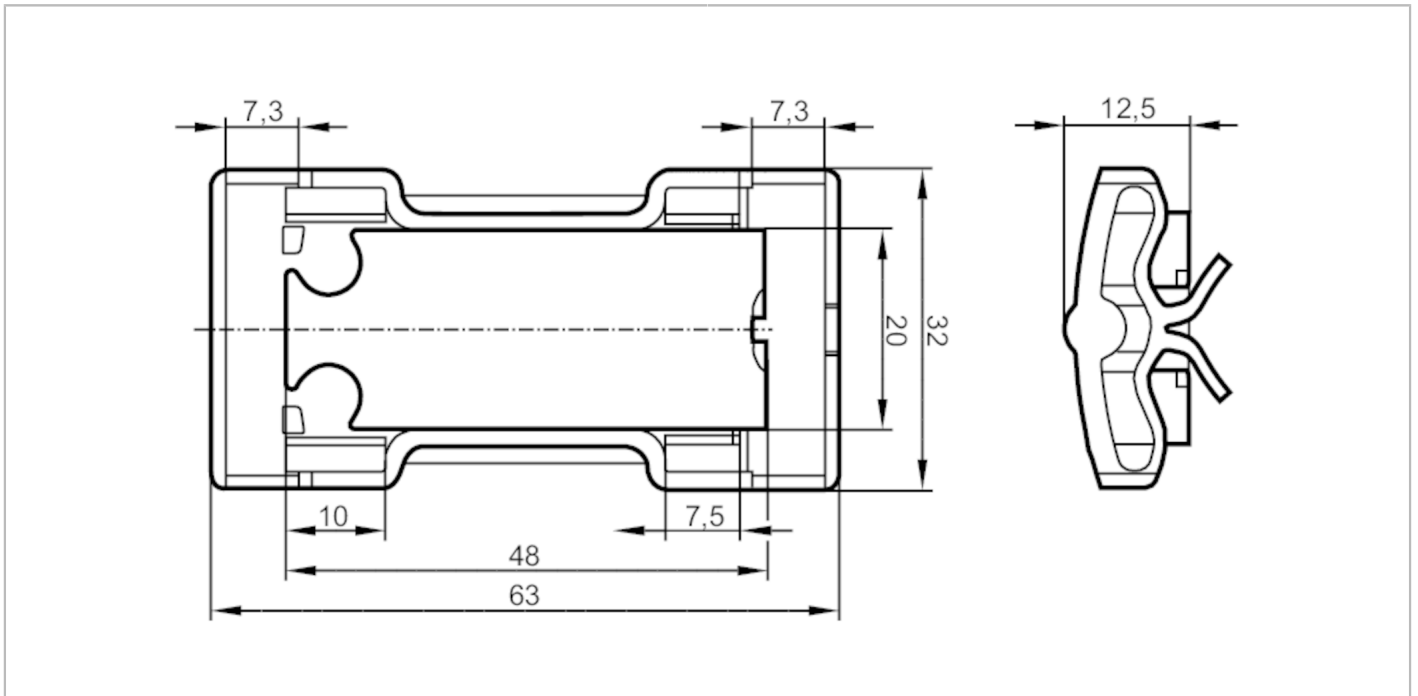


# E12163



## Mounting adapter for mounting to pipes

MOUNTING ADAPTER KQ



### Application

Design

Fixing of the types KQ5 and KQ6 to pipes and tubes,  
Pipe and tube installation KQ5 / KQ6 with cable ties

### Operating conditions

Ambient temperature

[°C]

-25...80

### Mechanical data

Weight

[g]

6.6

Dimensions

[mm]

32 x 12.5 x 63

Material

Mounting adapter: PA 12 black

### Remarks

Pack quantity

1 pcs.