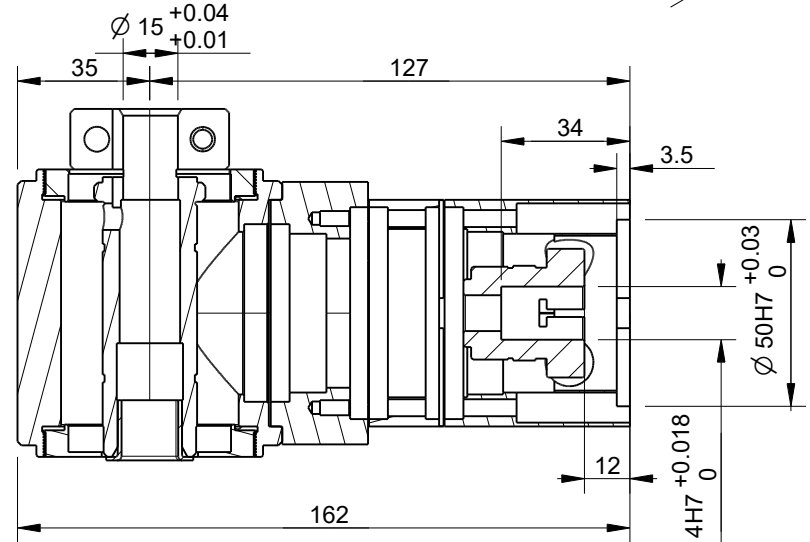
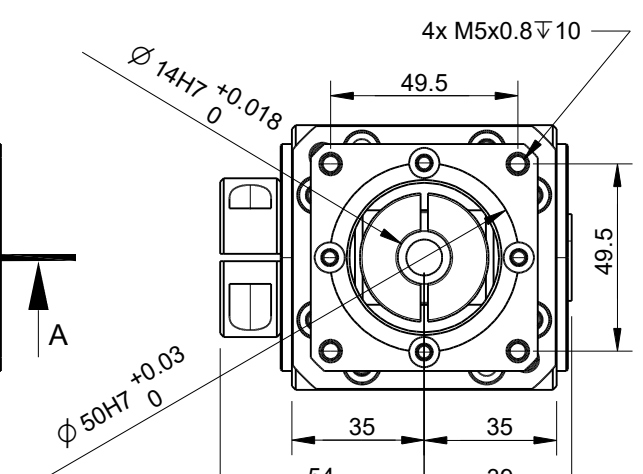
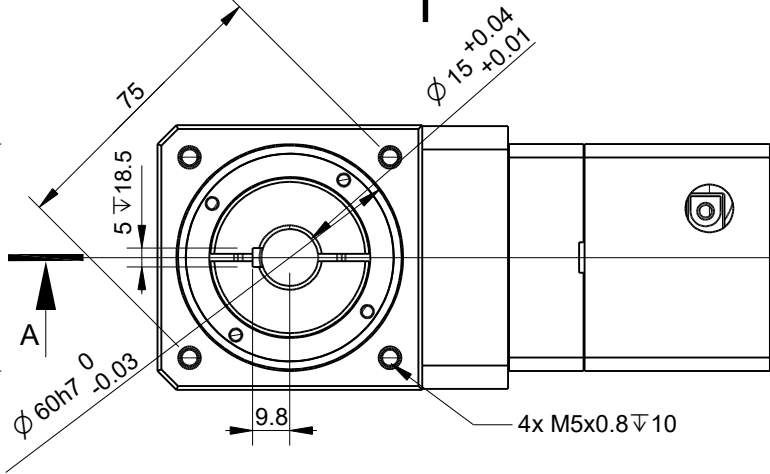
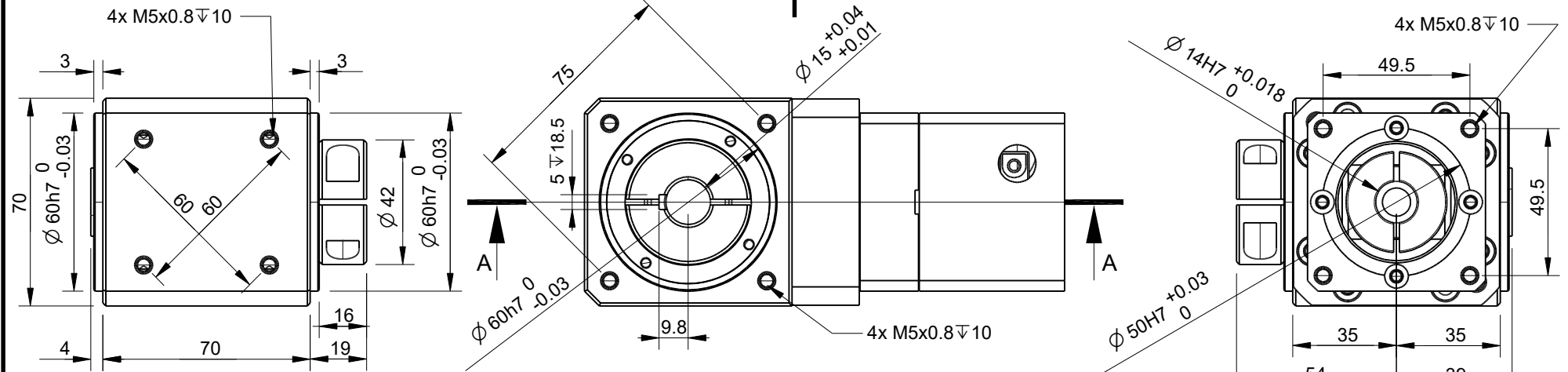
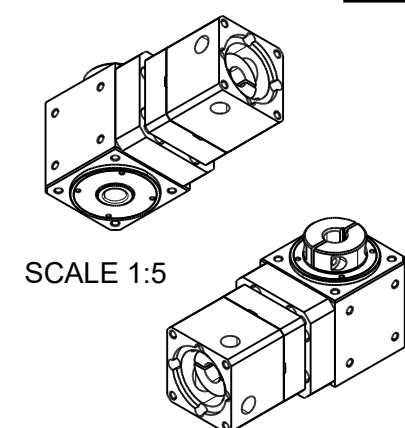


RevNo	Revision note	Date	Signature	Checked
-------	---------------	------	-----------	---------



Section A-A



Nominal Output Torque	44.1	Nm
	390	Lb-in
Max. Acceleration Torque	3 Times Nominal Output Torque	
Emergency Stop Torque	3.4 times Nominal Output Torque	
Permissible Input Speed	3000	RPM
Gear Ratio	32	
Standard Max Backlash	<5	Arcmin
Max. radial force	843	N
	189	Lbf
Max. axial force	422	N
	95	Lbf
Rated Life	>10,000	Hours
Operating Temperature Range	-10°C + 40°C ambient - 90°C max. operating case temperature	
Lubrication	Lubricated for Life (synthetic grease)	
Degree of Protection	IP54	
Gearhead Inertia	0.127	Kg-cm ²
Efficiency at full load	80%	
Weight	2.5	Kg
No-load running torque	0.3	N
	2.6	Lb-in

Units	mm
Tolerances	± 0.1mm unless otherwise specified

Itemref	Quantity	Title/Name, designation, material, dimension etc			Article No./Reference	
Drawn by	Checked by	Approved by - date	File name	Date	Scale	
Cas Jansen	Kevin Damen	9-8-2022		9-8-2022	1:2	

5928

www.damencnc.com

5928 DCNC-RAG-F70 I=32 Right Angle Gearbox (60x60mm)	Edition	Sheet
		1 OF 1