

SYNTESI® SHUT-OFF VALVE

This device separates the compressed air circuit from the main air supply. It is a three-way valve that relieves the downstream system in the closed position. This makes it useful for maintenance operations or when the air supply to a machine or piece of equipment needs to be shut off.

Manual, pneumatic, electro-pneumatic and assisted electro-pneumatic control versions are available. The last version must be used if the inlet pressure is outside the electro-pneumatic valve operating range, so for particularly low or high pressures.

The version with manual control can be locked and you can enter up to two padlocks on size 1 and up to three on size 2 when the valve is in the closed position. On the front and back there is a port (1/8" for size 1 and 1/4" size 2) that can be used with pressure gauges, pressure switches or as an additional air intake.

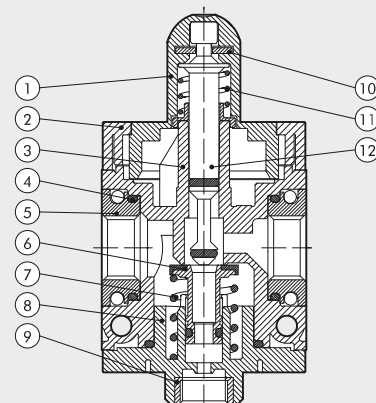


TECHNICAL DATA

	V3V SY1			V3V SY2			
	1/8"	1/4"	3/8"	3/8"	1/2"	3/4"	1"
Threaded port	1/8"	1/4"	3/8"	3/8"	1/2"	3/4"	1"
Threaded discharge port	1/8"			1/4"			
Type of control	Manual - pneumatic - Elpn - Elpn pilot-assisted			Manual - Pneumatic - Cnomo elpn - Cnomo elpn pilot-assisted			
Max inlet pressure for pneumatic and solenoid pilot-assisted versions	bar 15			bar 13			
	MPa 1.5			MPa 1.3			
	psi 217			psi 188			
Inlet pressure for solenoid version	bar 3 - 10			bar 3 - 10			
	MPa 0.3 - 1			MPa 0.3 - 1			
	psi 43 - 145			psi 43 - 145			
Pilot pressure for pneumatic and solenoid pilot-assisted versions	bar 3 - 10			bar 3 - 10			
	MPa 0.3 - 1			MPa 0.3 - 1			
	psi 43 - 145			psi 43 - 145			
Flow rate at 6.3 bar (0.63 MPa; 91 psi) ΔP 0.5 bar (0.05 MPa; 7 psi)	Nl/min 800	Nl/min 1000	Nl/min 1100	Nl/min 2800	Nl/min 3000	Nl/min 3000	
	scfm 28	scfm 35	scfm 39	scfm 99	scfm 106	scfm 106	
Flow rate at 6.3 bar (0.63 MPa; 91 psi) ΔP 1 bar (0.1 MPa; 14 psi)	Nl/min 1100	Nl/min 1500	Nl/min 1600	Nl/min 3600	Nl/min 4000	Nl/min 4000	
	scfm 39	scfm 53	scfm 57	scfm 127	scfm 141.5	scfm 141.5	
Exhaust flow rate at 6.3 bar (0.63 MPa; 91 psi)	Nl/min 500			Nl/min 2000			
	scfm 18			scfm 71			
Min/max temperature at 10 bar; 1 MPa; 145 psi	°C From -10 to +50			°C From -10 to +50			
Padlockable knob				Included			
Weight	g 197	g 192	g 183	g 476	g 449	g 445	g 433
Fluid	Compressed air or other inert gases						
Mounting position				In any position			
Additional air take-off, for pressure gauges or fittings	1/8", front and rear			1/4", front and rear			
Additional air take-off flow rate at 6.3 bar (0.63 MPa; 91 psi) ΔP 1 bar (0.1 MPa; 14 psi)	Nl/min 500			Nl/min 1500			
	scfm 18			scfm 53			
Wall fixing screws	No. 2 M4 screws			No. 2 M5 screws			
Bobbin capacity for electro-pneumatic version	W 12 VDC and 24 VDC = 2W			W 12 VDC and 24 VDC = 2W; 24 VAC, 110 VAC and 220 VAC = 3.5 VA			
	24 VAC, 110 VAC and 220 VAC = 3.5 VA			24 VDC = 4W; 24 VAC, 110 VAC, 220 VAC = 4 VA			
Manual control of electro-pneumatic versions	Bistable: horizontal = OFF, vertical = ON						

COMPONENTS

- ① Technopolymer knob
- ② Technopolymer hinge
- ③ Technopolymer body
- ④ NBR o-ring gasket
- ⑤ IN/OUT bushing made of OT58 nickel-plated brass or passivated aluminium for 3/4" - 1"
- ⑥ OT58 brass valve with NBR vulcanized gasket
- ⑦ Stainless steel valve spring
- ⑧ Technopolymer plug
- ⑨ OT58 brass threaded insert
- ⑩ Galvanised steel plate for knob locking (stainless steel for anti-corrosion version)
- ⑪ Stainless steel spring stem recovery
- ⑫ OT58 brass stem



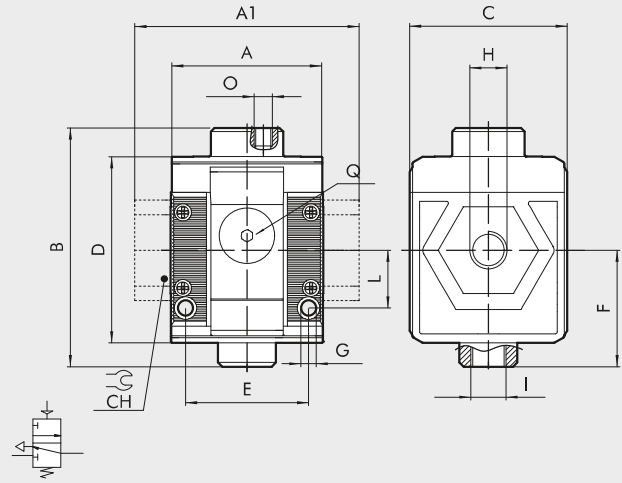
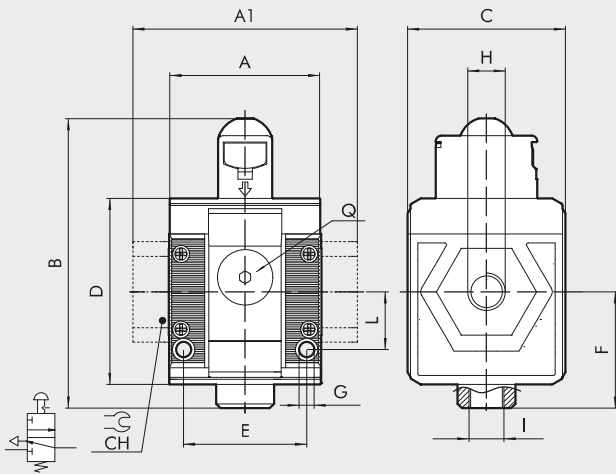
DIMENSIONS

MANUAL

SY1-SY2

PNEUMATIC

SY1-SY2

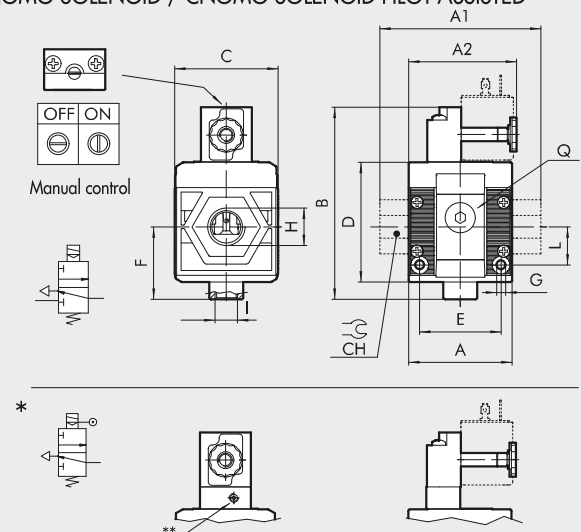
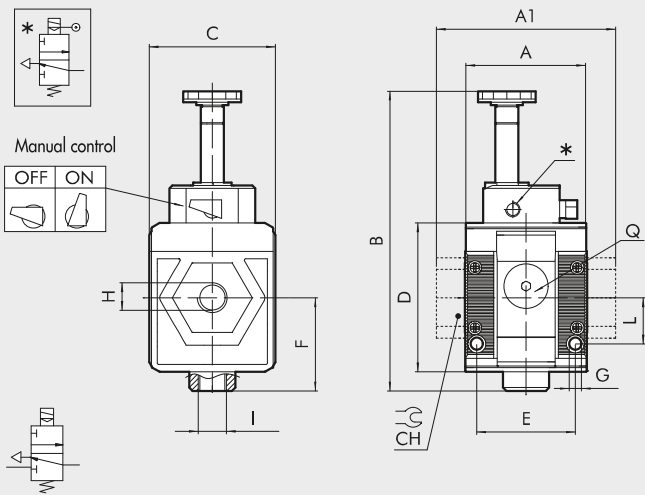


SOLENOID/SOLENOID PILOT-ASSISTED*

SY1

CNOMO SOLENOID / CNOMO SOLENOID PILOT-ASSISTED*

SY2



	MANUAL				PNEUMATIC				SOLENOID/SOLENOID PILOT-ASSISTED			CNOMO SOLENOID/CNOMO SOLENOID PILOT-ASSISTED														
	SIZE 1		SIZE 2		SIZE 1		SIZE 2		SIZE 1			SIZE 2														
H (threaded port)	1/8"	1/4"	3/8"	3/8"	1/2"	3/4"	1"	1/8"	1/4"	3/8"	3/8"	1/2"	3/4"	1"	1/8"	1/4"	3/8"	3/8"	1/2"	3/4"	1"					
A	-	42	-	-	61	-	-	42	-	-	61	-	-	42	-	-	61	-	-	61	-	-	95	95		
A1	-	-	44	-	-	95	95	-	-	44	-	-	95	95	-	-	44	-	-	95	95	-	-	95	95	
A2	-	-	-	-	-	-	-	-	-	-	-	-	-	-	-	-	-	-	-	-	-	-	-	-	65	
B	80	-	-	109	-	-	-	66	-	-	94	-	-	104	-	-	-	-	-	-	-	-	-	-	113	
Cnomo	-	-	-	-	-	-	-	-	-	-	-	-	-	-	-	-	-	-	-	-	-	-	-	-	126	
Cnomo pilot ass.	-	-	-	-	-	-	-	-	-	-	-	-	-	-	-	-	-	-	-	-	-	-	-	-	61	
C	44	-	-	61	-	-	-	44	-	-	61	-	-	44	-	-	61	-	-	61	-	-	61	-	61	
CH	-	-	-	-	-	-	32	36	-	-	-	-	32	36	-	-	-	-	-	-	-	-	-	-	32	36
D	51.5	-	-	70.5	-	-	-	51.5	-	-	70.5	-	-	51.5	-	-	70.5	-	-	70.5	-	-	70.5	-	70.5	
E	33.5	-	-	47.5	-	-	-	33.5	-	-	47.5	-	-	33.5	-	-	47.5	-	-	47.5	-	-	47.5	-	47.5	
F	32.2	-	-	42.7	-	-	-	32.2	-	-	42.7	-	-	32.2	-	-	42.7	-	-	42.7	-	-	42.7	-	42.7	
G	Hole for M4 screws		Hole for M5 screws		Hole for M4 screws		Hole for M5 screws		Hole for M4 screws			Hole for M5 screws			Hole for M4 screws			Hole for M5 screws								
I (exhaust)	1/8"	-	-	1/4"	-	-	1/8"	1/4"	-	-	1/8"	-	-	1/4"	-	-	1/8"	-	-	1/4"	-	-	1/8"	-	1/4"	
L	16	-	-	22.5	-	-	16	22.5	-	-	16	-	-	16	-	-	22.5	-	-	22.5	-	-	16	-	22.5	
O (pilot)	-	-	-	-	-	-	M5	1/8"	-	-	1/8"	-	-	-	-	-	-	-	-	-	-	-	-	-	-	
Q (no. 2 additional air takes-off)	1/8"	-	-	1/4"	-	-	1/8"	1/4"	-	-	1/8"	-	-	1/8"	-	-	1/4"	-	-	1/8"	-	-	1/8"	-	1/4"	
** Pilot	-	-	-	-	-	-	-	-	-	-	-	-	-	M5	-	-	-	-	-	M5	-	-	M5	-	M5	

KEY TO CODES

56	1	1	V	10	1
SYNTESI	SIZE	THREADED INPUT CONNECTION	ELEMENT	TYPE	THREADED OUTPUT CONNECTION
56 Syntesi 5X Syntesi anti-corrosion	1 Size 1 <hr/> 2 Size 2	0 Without bushing 1 1/8" port 2 1/4" port 3 3/8" port <hr/> 0 Without bushing 3 3/8" port 4 1/2" port 5 3/4" port 6 1" port	V Shut-off valve	10 Manual ● 20 Pneumatic ● 30 Solenoid pilot-assisted ● 70 Solenoid	0 Without bushing 1 1/8" port 2 1/4" port 3 3/8" port <hr/> 0 Without bushing 3 3/8" port 4 1/2" port 5 3/4" port 6 1" port

● Not available in the anti-corrosion version.

PURCHASE ORDER CODES HAVING A MORE FREQUENT USE

N.B. Besides the below mentioned codes, you can order elements composed at your will according to the key to codes.

Code	Description	Code	Description	NOTE
Syntesi® SY1 SHUT-OFF VALVE				NOTE Anti-corrosion version 5X ----- Example 5X11V101 V3V SY1 1/8 anti-corrosion
5610V100	V3V SY1 manual without bushings	5620V100	V3V SY2 manual without bushings	
5611V101	V3V SY1 1/8 manual	5623V103	V3V SY2 3/8 manual	
5612V102	V3V SY1 1/4 manual	5624V104	V3V SY2 1/2 manual	
5613V103	V3V SY1 3/8 manual	5625V105	V3V SY2 3/4 manual	
		5626V106	V3V SY2 1 manual	
5610V200	V3V SY1 pneumatic without bushings	5620V200	V3V SY2 pneumatic without bushings	
5611V201	V3V SY1 1/8 pneumatic	5623V203	V3V SY2 3/8 pneumatic	
5612V202	V3V SY1 1/4 pneumatic	5624V204	V3V SY2 1/2 pneumatic	
5613V203	V3V SY1 3/8 pneumatic	5625V205	V3V SY2 3/4 pneumatic	
		5626V206	V3V SY2 1 pneumatic	
5610V300	V3V SY1 elpn pilot-assisted without bushings	5620V300	V3V SY2 elpn pilot-assisted Cnomo without bushings	
5611V301	V3V SY1 1/8 elpn pilot-assisted	5623V303	V3V SY2 3/8 elpn pilot-assisted Cnomo	
5612V302	V3V SY1 1/4 elpn pilot-assisted	5624V304	V3V SY2 1/2 elpn pilot-assisted Cnomo	
5613V303	V3V SY1 3/8 elpn pilot-assisted	5625V305	V3V SY2 3/4 elpn pilot-assisted Cnomo	
		5626V306	V3V SY2 1 elpn pilot-assisted Cnomo	
5610V700	V3V SY1 elpn without bushings	5620V700	V3V SY2 elpn without bushings	
5611V701	V3V SY1 1/8 elpn	5623V703	V3V SY2 3/8 elpn	
5612V702	V3V SY1 1/4 elpn	5624V704	V3V SY2 1/2 elpn	
5613V703	V3V SY1 3/8 elpn	5625V705	V3V SY2 3/4 elpn	
		5626V706	V3V SY2 1 elpn	

NOTES