

HK5501A



CLAMPING ELEMENTS | MANUAL SERIES HK

- ▶ **broad range of products**
For all common profile rail guides
- ▶ **Tool-free opening and closing (bi-stable)**
By turning the clamping lever
- ▶ **Maintenance free**
Up to 50,000 static clamping cycles

[ADD TO REQUEST CART](#)

[ADD TO COMPARE](#)

Matching rail / wagon combinations



Rail manufacturer	Rail type	Rail size	Carriage type	
Ewellix (SKF)	LLUH	55	LLUHC..A	show variant
Ewellix (SKF)	LLUH	55	LLUHC..LA	show variant
Ewellix (SKF)	LLUH	55	LLUHC..LR	show variant
Ewellix (SKF)	LLUH	55	LLUHC..R	show variant
HepcoMotion	HLG	55	HLG..F	show variant
HepcoMotion	HLG	55	HLG..FL	show variant
HepcoMotion	HLG	55	HLG..R	show variant
HepcoMotion	HLG	55	HLG..RL	show variant
HIWIN	HG(QH)	55	HGL..CA	show variant
HIWIN	HG(QH)	55	HGL..HA	show variant
HIWIN	HG(QH)	55	HGW..CA	show variant
HIWIN	HG(QH)	55	HGW..CC	show variant
HIWIN	HG(QH)	55	HGW..HA	show variant
HIWIN	HG(QH)	55	HGW..HC	show variant
HIWIN	HG(QH)	55	HGH..CA	show variant

Rail manufacturer	Rail type	Rail size	Carriage type	
HIWIN	HG(QH)	55	HGH..HA	show variant
HIWIN	RG(QR)	55	RGW..CC	show variant
HIWIN	RG(QR)	55	RGW..HC	show variant
HIWIN	RG(QR)	55	RGH..CA	show variant
HIWIN	RG(QR)	55	RGH..HA	show variant
IKO	LRX(MX)	55	LRX	show variant
IKO	LRX(MX)	55	LRXC	show variant
IKO	LRX(MX)	55	LRXG	show variant
IKO	LRX(MX)	55	MX	show variant
IKO	LRX(MX)	55	MXC	show variant
IKO	LRX(MX)	55	MXG	show variant
IKO	LRX(MX)	55	MXL	show variant
IKO	LRX(MX)	55	MXS	show variant
IKO	LRX(MX)	55	LRXD	show variant
IKO	LRX(MX)	55	LRXDC	show variant
IKO	LRX(MX)	55	LRXDG	show variant
IKO	LRX(MX)	55	MXD	show variant
IKO	LRX(MX)	55	MXDC	show variant
IKO	LRX(MX)	55	MXDG	show variant
IKO	LRX(MX)	55	MXDL	show variant
IKO	LWH(MH)	55	LWH..B	show variant
IKO	LWH(MH)	55	LWHG	show variant
IKO	LWH(MH)	55	LWHT..B	show variant
IKO	LWH(MH)	55	LWHTG	show variant
IKO	LWH(MH)	55	LWHD..B	show variant
IKO	LWH(MH)	55	LWHDG	show variant
IKO	LWH(MH)	55	LWHY	show variant
INA	TKVD(KUVE)	55	KWVE..-B	show variant
INA	TKVD(KUVE)	55	KWVE..-B-L	show variant
INA	TKVD(KUVE)	55	KWVE..-B-S	show variant
INA	TKVD(KUVE)	55	KWVE..-B-SL	show variant
INA	TSX-E(RUE)	55	RWU..-E	show variant
INA	TSX-E(RUE)	55	RWU..-E-L	show variant
INA	TSX-E(RUE)	55	RWU..-E-H	show variant

Rail manufacturer	Rail type	Rail size	Carriage type	
INA	TSX-E(RUE)	55	RWU..E-HL	show variant
NB	EXRAIL	55	X..YE	show variant
NB	EXRAIL	55	X..HYF	show variant
NSK	LA(IL1A)	55	LAA..AL	show variant
NSK	LA(IL1A)	55	LAA..BL	show variant
NSK	LA(IL1A)	55	LAA..EL	show variant
NSK	LA(IL1A)	55	LAA..FL	show variant
NSK	LA(IL1A)	55	LAA..GL	show variant
NSK	LA(IL1A)	55	LAA..HL	show variant
NSK	LA(IL1A)	55	LAA..AN	show variant
NSK	LA(IL1A)	55	LAA..BN	show variant
NSK	LH(L1H)	55	LAH..ELZ	show variant
NSK	LH(L1H)	55	LAH..EMZ	show variant
NSK	LH(L1H)	55	LAH..FLZ	show variant
NSK	LH(L1H)	55	LAH..GLZ	show variant
NSK	LH(L1H)	55	LAH..GMZ	show variant
NSK	LH(L1H)	55	LAH..HLZ	show variant
NSK	LH(L1H)	55	LAH..ANZ	show variant
NSK	LH(L1H)	55	LAH..BNZ	show variant
NSK	NH(N1H)	55	NAH..AL	show variant
NSK	NH(N1H)	55	NAH..BL	show variant
NSK	NH(N1H)	55	NAH..EM	show variant
NSK	NH(N1H)	55	NAH..GM	show variant
NSK	NH(N1H)	55	NAH..AN	show variant
NSK	NH(N1H)	55	NAH..BN	show variant
NTN-SNR	LGB	55	LGBCH..FE	show variant
NTN-SNR	LGB	55	LGBCH..FL	show variant
NTN-SNR	LGB	55	LGBCH..FN	show variant
NTN-SNR	LGB	55	LGBCS..BE	show variant
NTN-SNR	LGB	55	LGBCS..BL	show variant
NTN-SNR	LGB	55	LGBCS..BN	show variant
NTN-SNR	LGB	55	LGBCS..BS	show variant
NTN-SNR	LGB	55	LGBXH..FE	show variant
NTN-SNR	LGB	55	LGBXH..FL	show variant

Rail manufacturer	Rail type	Rail size	Carriage type	
NTN-SNR	LGB	55	LGBXH..FN	show variant
NTN-SNR	LGB	55	LGBXS..BE	show variant
NTN-SNR	LGB	55	LGBXS..BL	show variant
NTN-SNR	LGB	55	LGBXS..BN	show variant
NTN-SNR	LGB	55	LGBXS..BS	show variant
NTN-SNR	LGB	55	LGBCH..BE	show variant
NTN-SNR	LGB	55	LGBCH..BL	show variant
NTN-SNR	LGB	55	LGBCH..BN	show variant
NTN-SNR	LGB	55	LGBXH..BE	show variant
NTN-SNR	LGB	55	LGBXH..BL	show variant
NTN-SNR	LGB	55	LGBXH..BN	show variant
PMI	MSA	55	MSA..A	show variant
PMI	MSA	55	MSA..E	show variant
PMI	MSA	55	MSA..LA	show variant
PMI	MSA	55	MSA..LE	show variant
PMI	MSA	55	MSA..LS	show variant
PMI	MSA	55	MSA..S	show variant
SBC	SBG	55	SBG..FL	show variant
SBC	SBG	55	SBG..FLL	show variant
SBC	SBG	55	SBG..SL	show variant
SBC	SBG	55	SBG..SLL	show variant
SBC	SBI	55	SBI..FL	show variant
SBC	SBI	55	SBI..FLL	show variant
SBC	SBI	55	SBI..HL	show variant
SBC	SBI	55	SBI..HLL	show variant
SBC	SBI	55	SBI..SL	show variant
SBC	SBI	55	SBI..SLL	show variant
Schneeberger	AMSA3B(MR)	55	AMSA3BW..C	show variant
Schneeberger	AMSA3B(MR)	55	AMSA3BW..D	show variant
Schneeberger	AMSA3L(MR)	55	AMSA3LW..C	show variant
Schneeberger	AMSA3L(MR)	55	AMSA3LW..D	show variant
Schneeberger	AMSABS3B(MR)	55	AMSABS3BW..C	show variant
Schneeberger	AMSABS3B(MR)	55	AMSABS3BW..D	show variant
Schneeberger	AMSD3B(MR)	55	AMSD3BW..C	show variant

Rail manufacturer	Rail type	Rail size	Carriage type	
Schneeberger	AMSD3B(MR)	55	AMSD3BW..D	show variant
Schneeberger	MR	55	MRW..A	show variant
Schneeberger	MR	55	MRW..B	show variant
Schneeberger	MR	55	MRW..C	show variant
Schneeberger	MR	55	MRW..D	show variant
TBI	TR	55	H-FE	show variant
TBI	TR	55	H-FL	show variant
TBI	TR	55	H-VE	show variant
TBI	TR	55	H-VL	show variant
THK	HSR	55	HSR..A	show variant
THK	HSR	55	HSR..B	show variant
THK	HSR	55	HSR..CA	show variant
THK	HSR	55	HSR..CB	show variant
THK	HSR	55	HSR..HA	show variant
THK	HSR	55	HSR..HB	show variant
THK	HSR	55	HSR..LA	show variant
THK	HSR	55	HSR..LB	show variant
THK	HSR	55	HSR..LR	show variant
THK	HSR	55	HSR..R	show variant
THK	HSR	55	HSR..YR	show variant
THK	NR	55	NR..A	show variant
THK	NR	55	NR..B	show variant
THK	NR	55	NR..LA	show variant
THK	NR	55	NR..LB	show variant
THK	NR	55	NR..LR	show variant
THK	NR	55	NR..R	show variant
THK	NRS	55	NRS..A	show variant
THK	NRS	55	NRS..B	show variant
THK	NRS	55	NRS..LA	show variant
THK	NRS	55	NRS..LB	show variant
THK	NRS	55	NRS..LR	show variant
THK	NRS	55	NRS..R	show variant
THK	SHS	55	SHS..C	show variant
THK	SHS	55	SHS..LC	show variant

Rail manufacturer	Rail type	Rail size	Carriage type	
THK	SHS	55	SHS..LV	show variant
THK	SHS	55	SHS..V	show variant
THK	SHS	55	SHS..LR	show variant
THK	SHS	55	SHS..R	show variant
THK	SNR	55	SNR..C	show variant
THK	SNR	55	SNR..LC	show variant
THK	SNR	55	SNR..LR	show variant
THK	SNR	55	SNR..R	show variant
THK	SNR	55	SNR..CH	show variant
THK	SNR	55	SNR..LCH	show variant
THK	SNR	55	SNR..LRH	show variant
THK	SNR	55	SNR..RH	show variant
THK	SNS	55	SNS..C	show variant
THK	SNS	55	SNS..LC	show variant
THK	SNS	55	SNS..LR	show variant
THK	SNS	55	SNS..R	show variant
THK	SNS	55	SNS..CH	show variant
THK	SNS	55	SNS..LCH	show variant
THK	SNS	55	SNS..LRH	show variant
THK	SNS	55	SNS..RH	show variant
THK	SR	55	SR..TB	show variant
THK	SR	55	SR..W	show variant
THK	SVR	55	SVR..C	show variant
THK	SVR	55	SVR..LC	show variant
THK	SVR	55	SVR..LR	show variant
THK	SVR	55	SVR..R	show variant
THK	SVR	55	SVR..LRH	show variant
THK	SVR	55	SVR..RH	show variant
THK	SVR	55	SVR..CH	show variant
THK	SVR	55	SVR..LCH	show variant
THK	SVS	55	SVS..C	show variant
THK	SVS	55	SVS..LC	show variant
THK	SVS	55	SVS..LR	show variant
THK	SVS	55	SVS..R	show variant

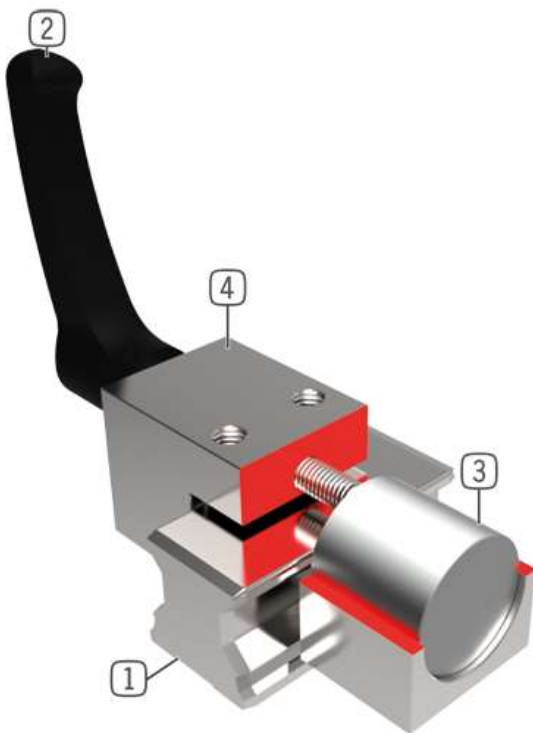
Rail manufacturer	Rail type	Rail size	Carriage type	
THK	SVS	55	SVS..LRH	show variant
THK	SVS	55	SVS..RH	show variant
THK	SVS	55	SVS..CH	show variant
Thomson	421	55	411..A	show variant
Thomson	421	55	411..B	show variant
Thomson	421	55	413..A	show variant
Thomson	421	55	413..B	show variant
Thomson	522	55	512..A	show variant
Thomson	522	55	512..B	show variant
Thomson	522	55	512..C	show variant
Thomson	522	55	512..D	show variant
PMI	MSR	55	MSR..E	show variant
PMI	MSR	55	MSR..LE	show variant
PMI	MSR	55	MSR..LS	show variant
PMI	MSR	55	MSR..S	show variant
Rollon	MRR(Mono Rail)	55	MCS	show variant
Rollon	MRR(Mono Rail)	55	MCS..L	show variant
Rollon	MRR(Mono Rail)	55	MCS..LW	show variant
Rollon	MRR(Mono Rail)	55	MCS..W	show variant
THK	HRX	55	HRX..C	show variant
THK	HRX	55	HRX..LC	show variant
THK	HRX	55	HRX..V	show variant
THK	HRX	55	HRX..LV	show variant
THK	HRX	55	HRX..LR	show variant
THK	HRX	55	HRX..R	show variant
HIWIN	CRG	55	CRGW..CC	show variant
HIWIN	CRG	55	CRGW..HC	show variant
HIWIN	CRG	55	CRGH..CA	show variant
HIWIN	CRG	55	CRGH..HA	show variant
WON ST	H	55	FL	show variant
WON ST	H	55	RL	show variant
WON ST	H	55	FN	show variant
WON ST	H	55	RN	show variant

Technical Data



Holding force	2000 [N]
Tightening torque	22.00 [Nm]
Installation direction	from above
max. length clamping	49
Wiper	-
Weight	1.6 [kg]

Benefits in detail



1

Profile rail guide

Available for all common profile rail guides

2

Clamping lever made from plastic

Freely adjustable (release by lifting)

3

Clamping jaw

The floating bearings guarantee symmetrical application of force

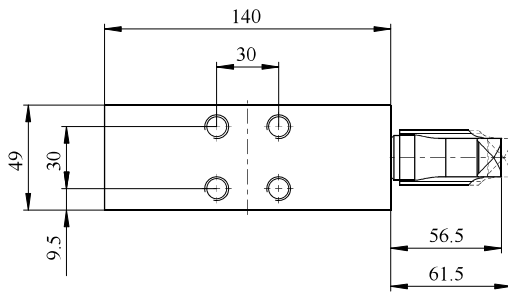
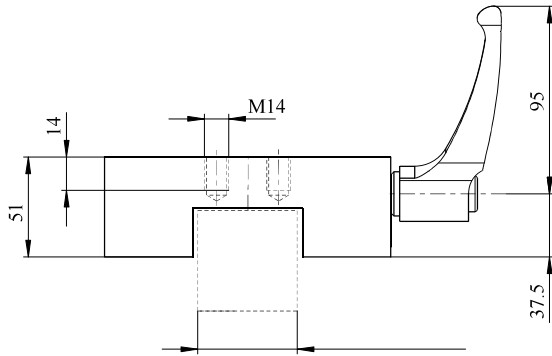
4

Housing

chemically nickel plated steel

Dimensional drawing





DOWNLOADS



Installation and operating instructions

Download 



Download CAD data

Download 



PDF datasheet

Download 

