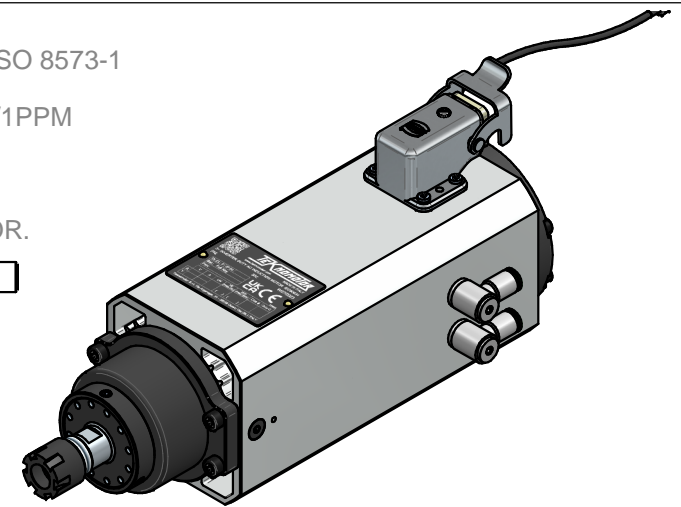


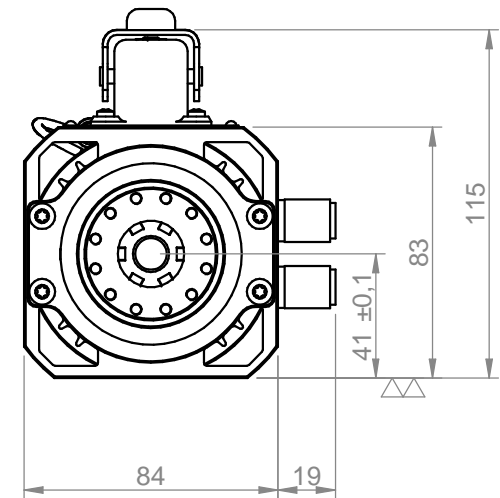
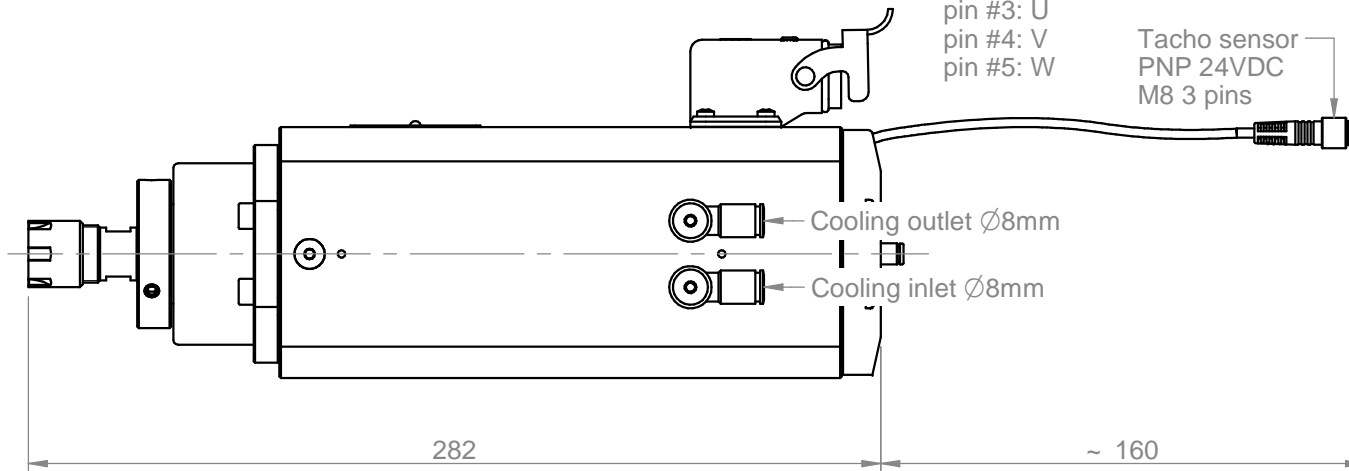
USE DRIED AIR:  
 ACCORDING TO DIRECTIVE ISO 8573-1  
 CLEANLINESS CLASS 2/4/3  
 SOLID PARTICLES: 1 micron/1PPM  
 HUMIDITY: DEW POINT 3°C  
 OIL: 1mg/m<sup>3</sup>  
 USE 5 micron FILTER +  
 0,1 micron min OIL SEPARATOR.








PLUG CONNECTION

pin #1: PTC  
 pin #2: PTC  
 pin #3: U  
 pin #4: V  
 pin #5: W

Tacho sensor  
 PNP 24VDC  
 M8 3 pins



Coolant type: Water + 10%  
 Ethylene Glycol + corrosion  
 inhibitors  
 Temperature setting: +25±3°C  
 (+77±5°F)  
 Minimum flow rate: 3 litres/minute  
 Maximum 3bar

Power [kW]	Duty Cycle	Base speed [rpm]	Base freq. [Hz]	Base voltage Δ [V]	Absorb. Δ [A]	Base voltage Y [V]	Absorb. Y [A]	 Teknomotor S.r.l. Via Argenege 31, I-32038 Quero Vas (BL) www.teknomotor.com
2.2	S1	24000	400	220	8.4			
Min speed [rpm]	Max speed [rpm]	Max freq. [Hz]	Protection	Ins. Cl.	Part number on nameplate			Title <b>C041-C-2DB-P-ER16-HY-LC</b>
6000	42000	700	IP64	F	COMC0410011			
Balancing according to ISO 1940 - G2.5 @ 42000 rpm		Balancing type		tool type	full key	tool type	half key	Peso / weight
								5.59 kg
rev. n°	description			date	signature	Customer	Drawing code	Tolleranze non quotate: UNI EN 22768 fH Smussi non quotati: 0.5 mm Rugosità secondo UNI ISO 1302
00	Emissione			09/05/2023	D. Bottarel	Catalogo	COMC0410011	
drawn - date	approved - date	checked - date	sostituisce il		foglio / sheet	scala		
D. Bottarel - 09/05/2023	S. Perli - 09/05/2023	S. Perli - 09/05/2023	sostituito dal		1 / 1	n.d.		