

Wrench heads

A-E

A-E P

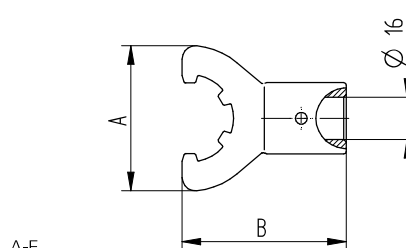
A-E M

A-E MX

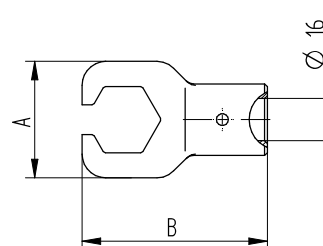
A-E MS

A-E AX

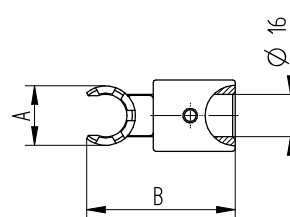
Type	Part no.	A [mm]	B [mm]	SW [mm]	
A-E					
A-E 16	7151.16000	55	62		•
A-E 20	7151.20000	60	62		•
A-E 25	7151.25000	70	72		•
A-E 32	7151.32000	80	72		•
A-E 40	7151.40000	96	82		•
A-E 50	7151.50000	111	94		•
A-E P					
A-E 11 P	7152.11010	32	57	19	•
A-E 16 P	7152.16010	44	70	28	•
A-E 20 P	7152.20010	52	80	34	•
A-E M					
A-E 8 M	7153.08000	12	53		•
A-E 11 M	7153.11000	17	54		•
A-E 16 M	7153.16000	22	56		•
A-E 20 M	7153.20000	29	68		•
A-E 25 M	7153.25000	36	70		•
A-E MX					
A-E 8 MX	7158.08000	12	53		•
A-E 11 MX	7158.11000	17	54		•
A-E 16 MX	7158.16000	22	56		•
A-E 20 MX	7158.20000	29	68		•
A-E 25 MX	7158.25000	36	70		•
A-E MS					
A-E 8 MS	7154.08000	19	51		•
A-E 11 MS	7154.11000	22	57		•
A-E 16 MS	7154.16000	33	60		•
A-E 20 MS	7154.20000	42	73		•
A-E AX					
A-E 11 AX	7157.11000	16	62		•
A-E 16 AX	7157.16000	22	63		•
A-E 20 AX	7157.20000	26	64		•
A-E 25 AX	7157.25000	29	93		•
A-E 32 AX	7157.32000	37	95		•
A-E 40 AX	7157.40000	47	99		•



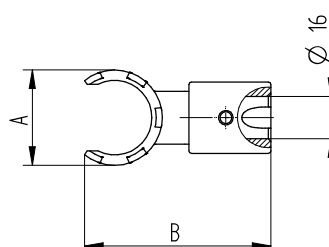
A-E



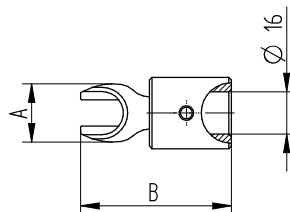
A-E P



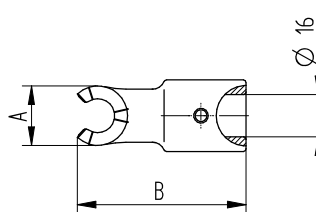
A-E M



A-E MX



A-E MS



A-E AX



Torque wrenches TORCO-FIX Freewheel wrench heads A-FLS Grip bar for wrench heads G-A

TORCO-FIX

A-FLS

G-A

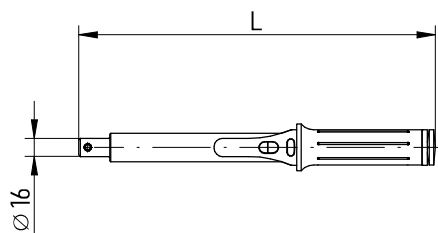
Type	Part no.	L1 [mm]	Range [Nm]	Range [ft-lbs]	System
TORCO-FIX					
TORCO-FIX 0	7150.02025	290	5–25	3,5–18	●●
TORCO-FIX I	7150.05050	335	10–50	7,5–36,5	●●
TORCO-FIX II	7150.20200	465	40–200	26,5–147	●●●
TORCO-FIX III	7150.60300	565	60–300	44,5–221	●●

Type	Part no.	D [mm]	D1 [mm]	System
Freewheel wrench heads A-FLS				
A-FLS Ø 16/MR 11	7855.11000	16	34	●
A-FLS Ø 24/MRM 16	7855.16800	24	47	●
A-FLS Ø 28/MR 16/SG 15	7855.16000	28	47	●●
A-FLS Ø 40/MR 25	7855.25000	40	61	●
A-FLS Ø 46/SG 25	7655.25000	46	68	●
A-FLS Ø 50/MR 32	7855.32000	50	77	●
A-FLS Ø 55/SG 32	7655.32000	55	77	●

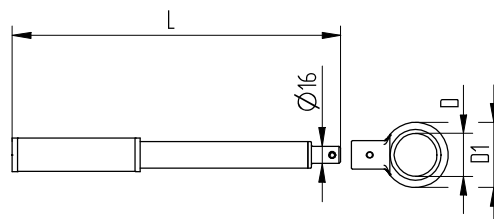
Type	Part no.	L1 [mm]	System
Grip bar for wrench heads G-A			
G-A	7655.99900	308	●●●
G-AS	7655.99500	120	●

Expert advice

Grip bar short G-AS is specially designed to be used with:
A-FLS Ø 16/MR 11
A-FLS Ø 24/MRM 16
A-FLS Ø 28/MR 16



TORCO-FIX



G-A/G-AS with A-FLS