

Cylindrical shank toolholders CYL

CYL/CYLF/CYDF

Features and benefits

Runout TIR $\leq 3 \mu\text{m}$ for CYL/ERM and CYL/ERMX

Measured from inner taper to outer shank.

Runout TIR $\leq 5 \mu\text{m}$ for CYLF/ERM and CYLF/ERMX

Measured from inner taper to outer shank.

Runout TIR $\leq 5 \mu\text{m}$ for CYDF/ERM and CYDF/ERMX

Measured from inner taper to outer shank.

Surface finish max. Ra 0.25

Achieve high clamping force and high transferable torque.

Sizes

ER 8–ER 40
h6 tolerance on shanks.

Types

- // With or without clamping flat
- // Double ER holders

Accessories are not included in delivery

Expert advice

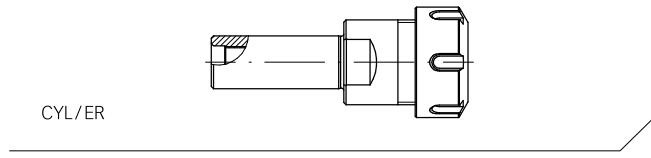
We recommend tightening the clamping nuts with our torque wrench.

For tightening torque recommendations, please refer to page 293.

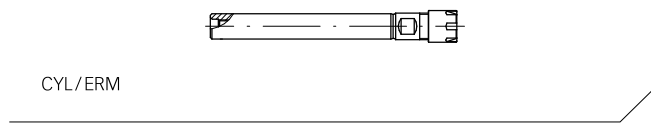


Available CYL toolholders and their key characteristics

Cylindrical REGO-FIX toolholders are designed for automatic turning machines and can also be utilized as extensions. We offer many different product types to fit your machining needs.



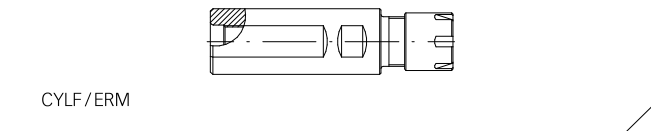
CYL/ER The short versions are particularly used on turret lathes, where a short overhang is often required.
For technical dimensions, please refer to page 100.



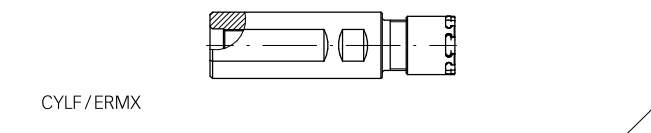
CYL/ERM This type is suited for Swiss automatic machines, machining centers and conventional machines. Can be used as extension.
For technical dimensions, please refer to page 102.



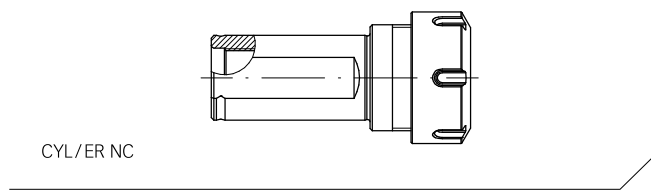
CYL/ERMX This type is suited for Swiss automatic machines, machining centers and conventional machines. The slip-off proof mini clamping nut intRlox® prevents injuries caused by slipping off while tightening the nut. Can be used as extension.
For technical dimensions, please refer to page 102.



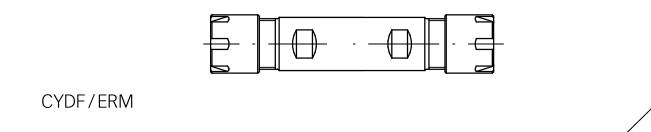
CYLF/ERM The line of cylindrical toolholders with clamping flat is particularly designed for Swiss automatic CNC machines, e.g., Citizen, Manurhin, Star or Tornos. Cannot be used as extension.
For technical dimensions, please refer to page 104.



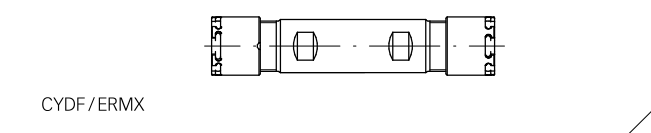
CYLF/ERMX The line of cylindrical toolholders with clamping flat is particularly designed for Swiss automatic CNC machines, e.g., Citizen, Manurhin, Star or Tornos. The slip-off proof mini clamping nut intRlox® prevents injuries caused by slipping off while tightening the nut. Cannot be used as extension.
For technical dimensions, please refer to page 104.



CYL/ER NC These toolholders are particularly suitable on Swiss automatic CNC turning machines, but can also be used on other turning machines.
For technical dimensions, please refer to page 107.



CYDF/ERM The line of double toolholders with clamping flat has been designed for Swiss automatic CNC machines, e.g., Citizen, Manurhin, Star or Tornos and offers the possibility to hold two cutting tools on the same toolholder.
For technical dimensions, please refer to page 108.



CYDF/ERMX The line of double toolholders with clamping flat has been designed for Swiss Automatic CNC machines, e.g., Citizen, Manurhin, Star or Tornos, and offers the possibility to hold two cutting tools on the same toolholder. The slip-off proof mini clamping nut intRlox® prevents injuries caused by slipping off while tightening the nut.
For technical dimensions, please refer to page 108.

Type	Part no.	Dimensions [mm]						Accessory	
		D	D1 h6	L	L1	G1	G2	Wrench	
CYL 1/2 [inch]									
CYL 1/2" x 070/ER 11	2613.11141	19	12.7	70	28.5	M 6	M 6	E 11 P	
CYL 1/2" x 100/ER 16	2613.11661	28	12.7	100	36	M 6	M 6	E 16 P	
CYL 1/2" x 100/ER 20	2613.12061	34	12.7	100	44.5	M 6	M 6	E 20 P	
CYL 14 [mm]									
CYL 14 x 060/ER 16	2614.11630	28	14	60	36.5	M 6	M 6	E 16 P	
CYL 16 [mm]									
CYL 16 x 060/ER 16	2616.11630	28	16	60	36.5	M 8 x 1	–	E 16 P	
CYL 5/8 [inch]									
CYL 5/8" x 060/ER 16	2616.11631	28	15.875	60	36.5	M 8 x 1	–	E 16 P	
CYL 5/8" x 100/ER 20	2616.12061	34	15.875	100	44.5	M 8 x 1	M 8 x 1	E 20 P	
CYL 3/4 [inch]									
CYL 3/4" x 050/ER 16	2619.11621	28	19.05	50	30.5	M 12 x 1	–	E 16 P	
CYL 3/4" x 100/ER 16	2619.11661	28	19.05	100	30.5	M 12 x 1	M 11 x 1	E 16 P	
CYL 3/4" x 060/ER 20	2619.12031	34	19.05	60	36.5	M 12 x 1	–	E 20 P	
CYL 3/4" x 050/ER 25	2619.12521	42	19.05	50	47	M 12 x 1	–	E 25	
CYL 20 [mm]									
CYL 20 x 050/ER 16	2620.11620	28	20	50	30.5	M 12 x 1	–	E 16 P	
CYL 20 x 100/ER 16	2620.11660	28	20	100	30.5	M 12 x 1	M 11 x 1	E 16 P	
CYL 20 x 030/ER 20	2620.12010	34	20	30	36.5	M 12 x 1	–	E 20 P	
CYL 20 x 060/ER 20	2620.12030	34	20	60	36.5	M 12 x 1	–	E 20 P	
CYL 20 x 050/ER 25	2620.12520	42	20	50	47	M 12 x 1	–	E 25	
CYL 20 x 100/ER 25	2620.12560	42	20	100	47	M 12 x 1	M 12 x 1	E 25	
CYL 20 x 050/ER 32	2620.13220	50	20	50	54	M 12 x 1	–	E 32	
CYL 20 x 100/ER 32	2620.13260	50	20	100	54	M 12 x 1	M 12 x 1	E 32	
CYL 25 [mm]									
CYL 25 x 050/ER 25	2625.12520	42	25	50	47	M 18 x 1.5	–	E 25	
CYL 25 x 100/ER 25	2625.12560	42	25	100	47	M 18 x 1.5	M 18 x 1.5	E 25	
CYL 25 x 050/ER 32	2625.13220	50	25	50	54	M 18 x 1.5	–	E 32	
CYL 25 x 050/ER 40	2625.14020	63	25	50	60	M 18 x 1.5	–	E 40	

Included in delivery: toolholders come with Hi-Q®/ER clamping nut and back-up screw

Type	Part no.	Dimensions [mm]						Accessory	
		D	D1 h6	L	L1	G1	G2	Wrench	
CYL 1 [inch]									
CYL 1" x 100/ER 20	2625.12061	34	25.4	100	39.5	M 14 x 1	M 14 x 1	E 20 P	
CYL 1" x 050/ER 25	2625.12521	42	25.4	50	47	M 18 x 1.5	–	E 25	
CYL 1" x 100/ER 25	2625.12561	42	25.4	100	47	M 18 x 1.5	M 18 x 1.5	E 25	
CYL 1" x 050/ER 32	2625.13221	50	25.4	50	53	M 18 x 1.5	–	E 32	
CYL 1" x 050/ER 40	2625.14021	63	25.4	50	60	M 18 x 1.5	–	E 40	
CYL 30 [mm]									
CYL 30 x 050/ER 25	2630.12520	42	30	50	42	M 18 x 1.5	–	E 25	
CYL 1 1/4 [inch]									
CYL 1 1/4" x 060/ER 32	2632.13231	50	31.75	60	53	M 22 x 1.5	–	E 32	

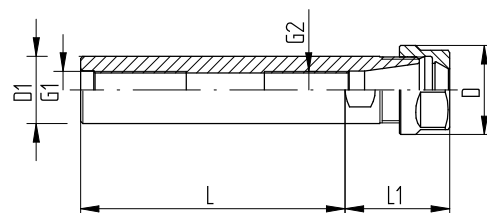
Included in delivery: toolholders come with Hi-Q®/ER clamping nut and back-up screw



Coolant adapters*

CGA M 12 x 1/1/8" NPT	7239.12181
CGA M 14 x 1/1/4" NPT	7239.14141
CGA M 18 x 1.5/1/4" NPT	7239.18141
CGA M 22 x 1.5/1/4" NPT	7239.22141

Converts back-up screw threads to coolant port for through coolant applications
*USA only



CYL/ER

CYL/ERM toolholders (mini clamping nut)

CYL

CYL/ERMX toolholders with intrRlox® (slip-off proof mini clamping nut)

Type	Part no.	Dimensions [mm]				G1	G2	Slip-off proof	Accessory
		D	D1 h6	L	L1				Wrench
CYL 6 [mm]									
CYL 6 x 045/ERM 11	2606.21120	16	6	45	26.5	–	–	–	E 11 M
CYL 6 x 045/ERMX 11	4606.21120	16	6	45	26.5	–	–	•	E 11 MX
CYL 7 [mm]									
CYL 7 x 045/ERM 11	2607.21120	16	7	45	26.5	–	–	–	E 11 M
CYL 7 x 045/ERMX 11	4607.21120	16	7	45	26.5	–	–	•	E 11 MX
CYL 8 [mm]									
CYL 8 x 080/ERM 8	2608.20850	12	8	80	26	M 5	–	–	E 8 M
CYL 8 x 080/ERMX 8	4608.20850	12	8	80	26	M 5	–	•	E 8 MX
CYL 8 x 056/ERM 11	2608.21130	16	8	56	26.5	M 5	–	–	E 11 M
CYL 8 x 056/ERMX 11	4608.21130	16	8	56	26.5	M 5	–	–	E 11 MX
CYL 3/8 [inch]									
CYL 3/8" x 070/ERM 8	2609.20841	12	9.525	70	23	M 5	M 5	–	E 8 M
CYL 3/8" x 070/ERMX 8	4609.20841	12	9.525	70	23	M 5	M 5	•	E 8 MX
CYL 10 [mm]									
CYL 10 x 060/ERM 16	2610.21630	22	10	60	38.5	M 5	–	–	E 16 M
CYL 10 x 060/ERMX 16	4610.21630	22	10	60	38.5	M 5	–	•	E 16 MX
CYL 12 [mm]									
CYL 12 x 080/ERM 8	2612.20850	12	12	80	17	M 5	–	–	E 8 M
CYL 12 x 080/ERMX 8	4612.20850	12	12	80	17	M 5	–	•	E 8 MX
CYL 12 x 080/ERM 16	2612.21650	22	12	80	38.5	M 5	–	–	E 16 M
CYL 12 x 080/ERMX 16	4612.21650	22	12	80	38.5	M 5	–	•	E 16 MX
CYL 1/2 [inch]									
CYL 1/2" x 140/ERM 11	2613.21191	16	12.7	140	29.5	M 6	M 6	–	E 11 M
CYL 1/2" x 140/ERMX 11	4613.21191	16	12.7	140	29.5	M 6	M 6	•	E 11 MX
CYL 1/2" x 140/ERM 16	2613.21691	22	12.7	140	37	M 6	M 6	–	E 16 M
CYL 1/2" x 140/ERMX 16	4613.21691	22	12.7	140	37	M 6	M 6	•	E 16 MX
CYL 16 [mm]									
CYL 16 x 150/ERM 11	2616.21190	16	16	150	21	M 8 x 1	M 8 x 1	–	E 11 M
CYL 16 x 150/ERMX 11	4616.21190	16	16	150	21	M 8 x 1	M 8 x 1	•	E 11 MX
CYL 16 x 100/ERM 20	2616.22060	28	16	100	42.5	M 8 x 1	–	–	E 20 M
CYL 16 x 100/ERMX 20	4616.22060	28	16	100	42.5	M 8 x 1	–	•	E 20 MX

CYL/ERM toolholders (mini clamping nut)

CYL

CYL/ERMX toolholders with intRlox® (slip-off proof mini clamping nut)

Type	Part no.	Dimensions [mm]					G1	G2	Slip-off proof	Accessory Wrench
		D	D1 h6	L	L1					
CYL 5/8 [inch]										
CYL 5/8" x 150/ERM 11	2616.21191	16	15.875	150	19.5	M 8 x 1	M 8 x 1	–	E 11 M	
CYL 5/8" x 150/ERMX 11	4616.21191	16	15.875	150	19.5	M 8 x 1	M 8 x 1	•	E 11 MX	
CYL 3/4 [inch]										
CYL 3/4" x 155/ERM 16	2619.21691	22	19.05	155	26.5	M 12 x 1	–	–	E 16 M	
CYL 3/4" x 155/ERMX 16	4619.21691	22	19.05	155	26.5	M 12 x 1	–	•	E 16 MX	
CYL 3/4" x 100/ERM 25	2619.22561	35	19.05	100	47	M 12 x 1	M 12 x 1	–	E 25 M	
CYL 3/4" x 100/ERMX 25	4619.22561	35	19.05	100	47	M 12 x 1	M 12 x 1	•	E 25 MX	
CYL 20 [mm]										
CYL 20 x 155/ERM 16	2620.21690	22	20	155	25.5	M 12 x 1	M 11 x 1	–	E 16 M	
CYL 20 x 155/ERMX 16	4620.21690	22	20	155	25.5	M 12 x 1	M 11 x 1	•	E 16 MX	
CYL 25 [mm]										
CYL 25 x 155/ERM 20	2625.22090	28	25	155	27	M 14 x 1	M 14 x 1	–	E 20 M	
CYL 25 x 155/ERMX 20	4625.22090	28	25	155	27	M 14 x 1	M 14 x 1	•	E 20 MX	
CYL 1 [inch]										
CYL 1" x 155/ERM 20	2625.22091	28	25.4	155	27	M 14 x 1	M 14 x 1	–	E 20 M	
CYL 1" x 155/ERMX 20	4625.22091	28	25.4	155	27	M 14 x 1	M 14 x 1	•	E 20 MX	

Included in delivery: toolholders come with Hi-Q®/ERM or Hi-Q®/ERMX clamping nut and back-up screw

