

1

2

3

4

5

6

RevNo	Revision note		Date	Signature	Checked
-------	---------------	--	------	-----------	---------

A

A

B

B

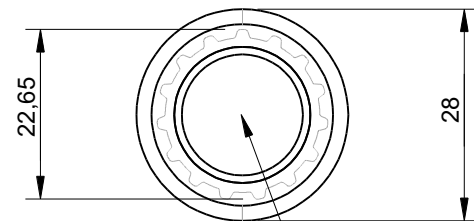
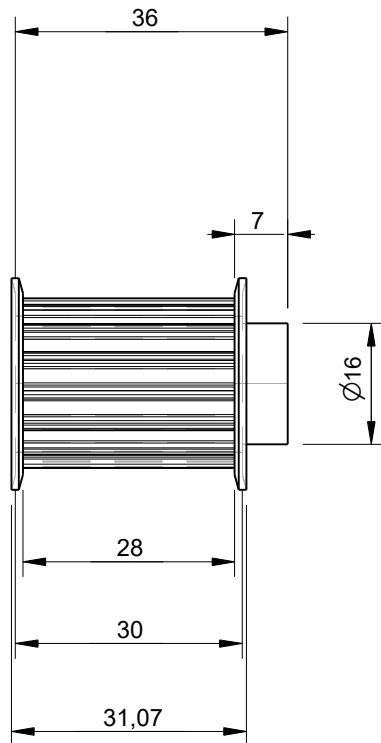
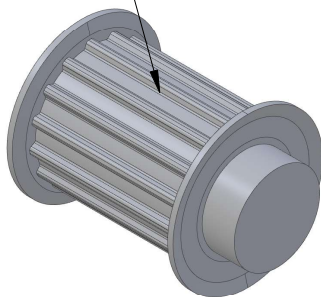
C

C

D

D

AT5 Pulley with 15 Teeth
Designed for use with
25mm wide belts



This AT5 pulley size
does not have a bore

Effective (Outer) Diameter	22.65mm
Pitch Diameter	23.85mm
Weight	0.04kg
With Flanges?	yes
Material	Aluminium
Units	mm
Tolerances	+/-0.1mm

Itemref	Quantity	Title/Name, designation, material, dimension etc	Article No./Reference		
Drawn by Kevin Damen	Checked by	Approved by - date	File name	Date 16-12-2023	Scale 1:1

6409

www.damencnc.com

6409 AT5 Pulley 36-AT5 Z=15 for 25mm wide belts	Edition	Sheet 1 OF 1
--	---------	-----------------

1

2

3

4

5

6