

1

2

3

4

5

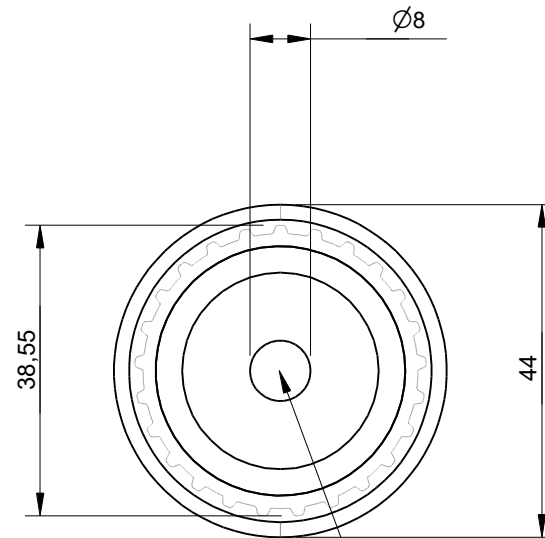
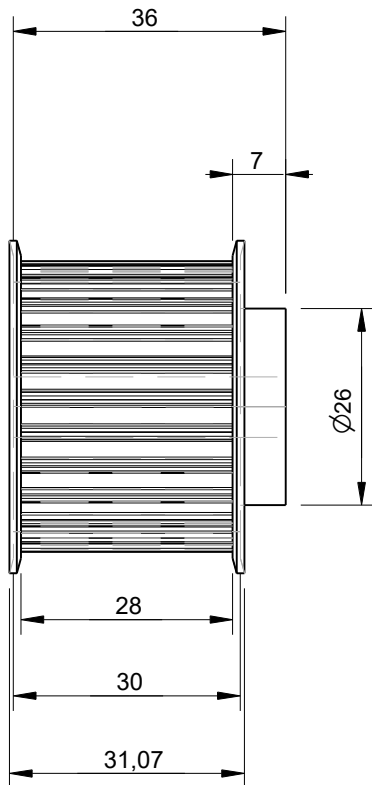
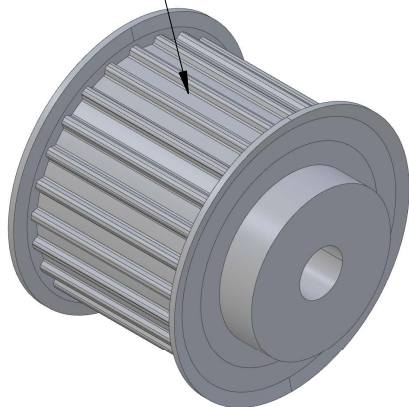
6

RevNo	Revision note		Date	Signature	Checked
-------	---------------	--	------	-----------	---------

A

A

AT5 Pulley with 25 Teeth  
Designed for use with  
25mm wide belts



This AT5 pulley size  
has a bore of 8mm

B

B

C

C

Effective (Outer) Diameter	38.55mm
Pitch Diameter	39.75mm
Weight	0.12kg
With Flanges?	yes
Material	Aluminium
Units	mm
Tolerances	+/-0.1mm

Itemref	Quantity	Title/Name, designation, material, dimension etc			Article No./Reference	
Drawn by Kevin Damen	Checked by	Approved by - date	File name	Date 15-12-2023	Scale 1:1	

# 6416

[www.damencnc.com](http://www.damencnc.com)

6416 AT5 Pulley 36-AT5 Z=25 for 25mm wide belts	Edition	Sheet 1 OF 1
--	---------	-----------------

1

2

3

4

5

6

D

D