

1

2

3

4

5

6

RevNo

Revision note

Date

Signature

Checked

A

A

B

B

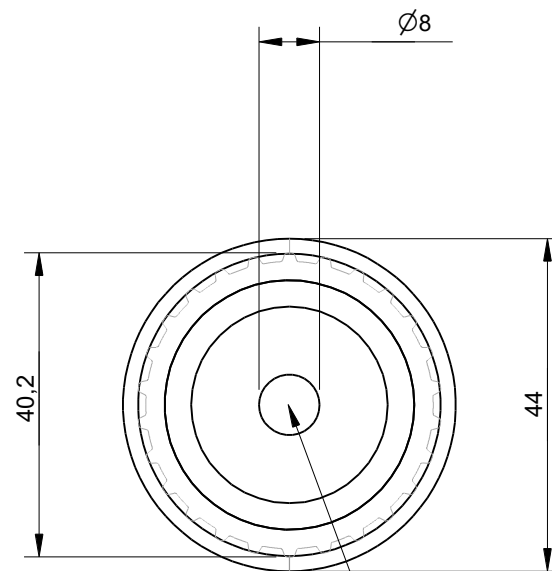
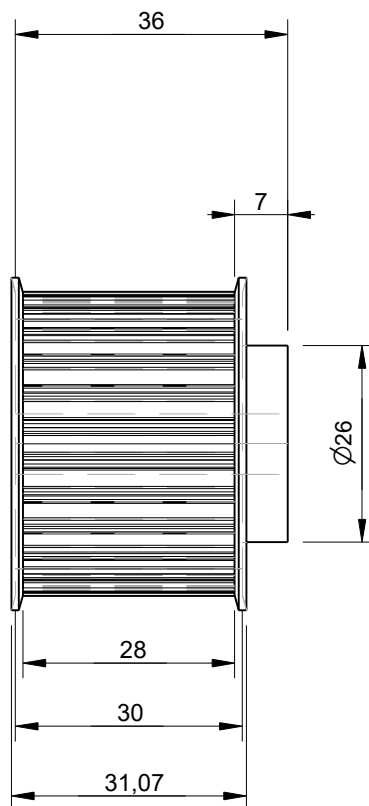
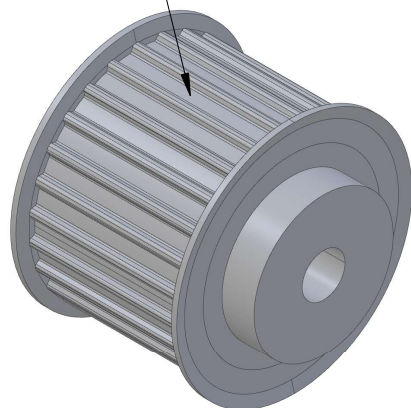
C

C

D

D

AT5 Pulley with 26 Teeth
Designed for use with
25mm wide belts



This AT5 pulley size
has a bore of 8mm

Effective (Outer) Diameter	40.20mm
Pitch Diameter	41.40mm
Weight	0.12kg
With Flanges?	yes
Material	Aluminium
Units	mm
Tolerances	+/-0.1mm

Itemref	Quantity	Title/Name, designation, material, dimension etc			Article No./Reference		
Drawn by Kevin Damen	Checked by	Approved by - date	File name	Date	Scale		
				15-12-2023	1:1		
6417			www.damencnc.com			Edition	Sheet
						6417 AT5 Pulley 36-AT5 Z=26 for 25mm wide belts	1 OF 1

1

2

3

4

5

6