

1

2

3

4

5

6

RevNo

Revision note

Date

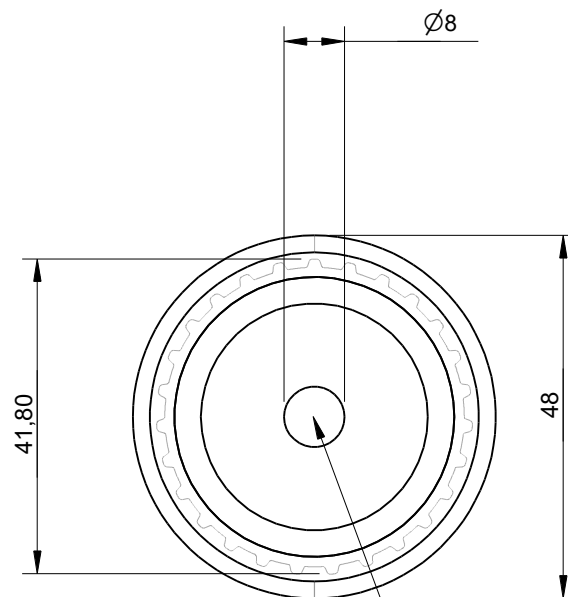
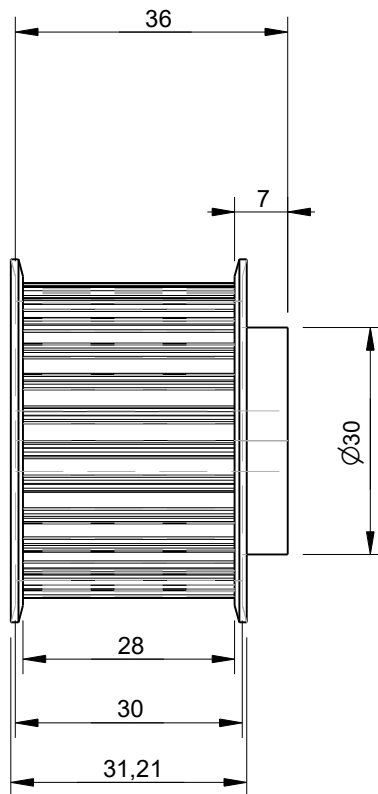
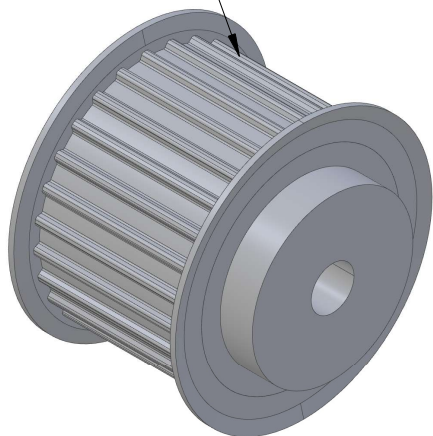
Signature

Checked

A

A

AT5 Pulley with 27 Teeth  
Designed for use with  
25mm wide belts



This AT5 pulley size  
has a bore of 8mm

B

B

C

C

Effective (Outer) Diameter	41.80mm
Pitch Diameter	43.00mm
Weight	0.13kg
With Flanges?	yes
Material	Aluminium
Units	mm
Tolerances	+/-0.1mm

Itemref	Quantity	Title/Name, designation, material, dimension etc			Article No./Reference	
Drawn by Kevin Damen		Checked by	Approved by - date	File name	Date 15-12-2023	Scale 1:1

# 6418

[www.damencnc.com](http://www.damencnc.com)

6418 AT5 Pulley 36-AT5 Z=27  
for 25mm wide belts

Edition

Sheet

1 OF 1

1

2

3

4

5

6

D

D