

1

2

3

4

5

6

RevNo

Revision note

Date

Signature

Checked

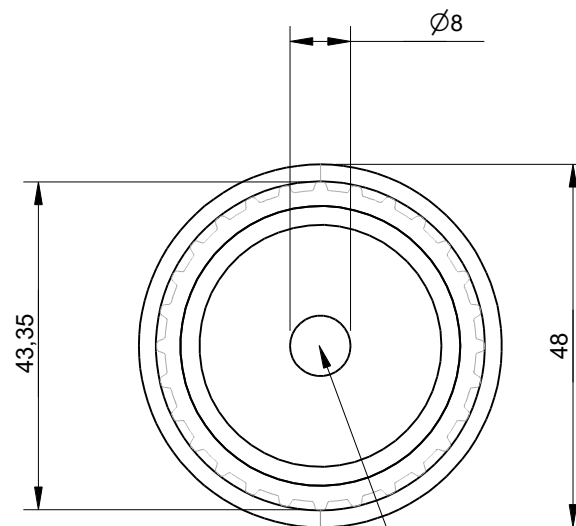
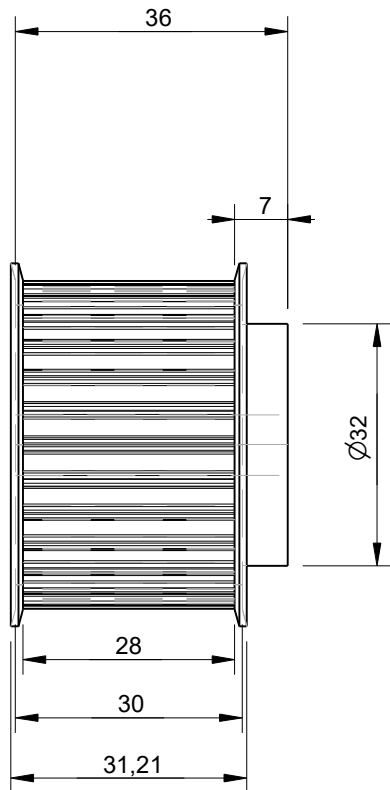
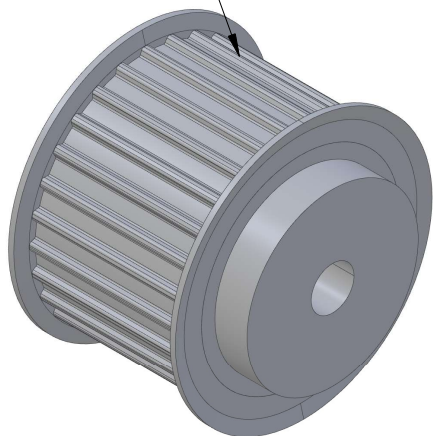
A

B

C

D

AT5 Pulley with 28 Teeth
Designed for use with
25mm wide belts



This AT5 pulley size
has a bore of 8mm

Effective (Outer) Diameter	43.35mm
Pitch Diameter	44.55mm
Weight	0.14kg
With Flanges?	yes
Material	Aluminium
Units	mm
Tolerances	+/-0.1mm

Itemref	Quantity	Title/Name, designation, material, dimension etc			Article No./Reference	
Drawn by Kevin Damen		Checked by	Approved by - date	File name	Date 13-12-2023	Scale 1:1

6419

www.damencnc.com

6419 AT5 Pulley 36-AT5 Z=28
for 25mm wide belts

Edition

Sheet

1 OF 1

1

2

3

4

5

6

A

B

C

D