

1

2

3

4

5

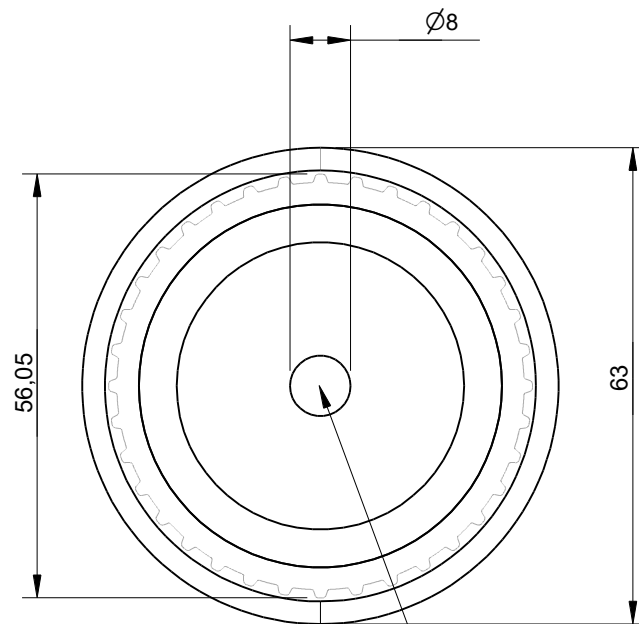
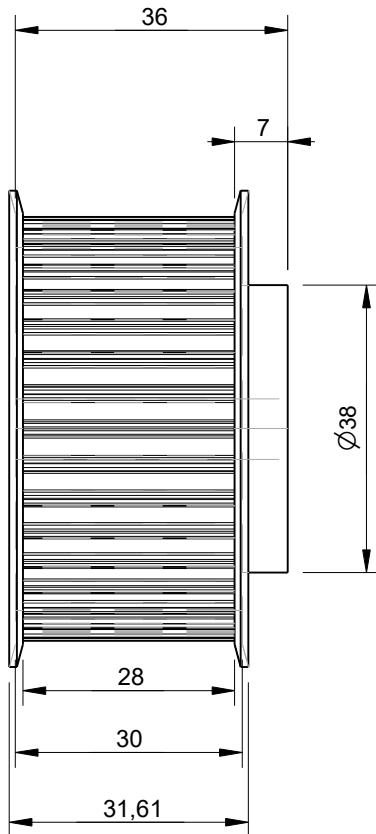
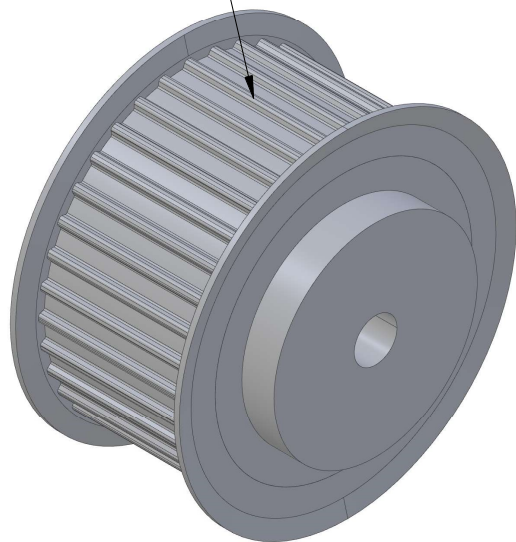
6

RevNo	Revision note		Date	Signature	Checked
-------	---------------	--	------	-----------	---------

A

A

AT5 Pulley with 36 Teeth
Designed for use with
25mm wide belts



This AT5 pulley size
has a bore of 8mm

B

B

C

C

Effective (Outer) Diameter	56.05mm
Pitch Diameter	57.25mm
Weight	0.23kg
With Flanges?	yes
Material	Aluminium
Units	mm
Tolerances	+/-0.1mm

Itemref	Quantity	Title/Name, designation, material, dimension etc			Article No./Reference	
Drawn by Kevin Damen	Checked by	Approved by - date	File name	Date 13-12-2023	Scale 1:1	

6422

www.damencnc.com

6422 AT5 Pulley 36-AT5 Z=36 for 25mm wide belts	Edition	Sheet 1 OF 1
--	---------	-----------------

1

2

3

4

5

6

D

D