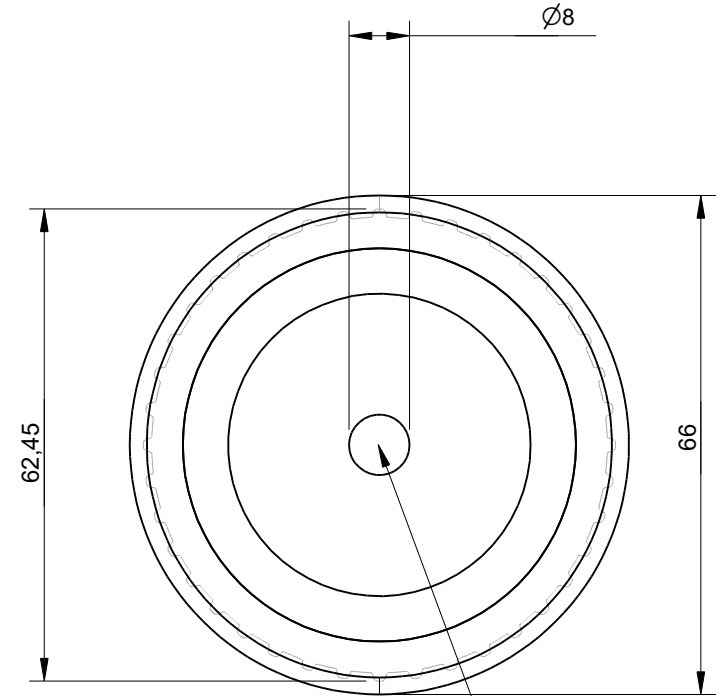
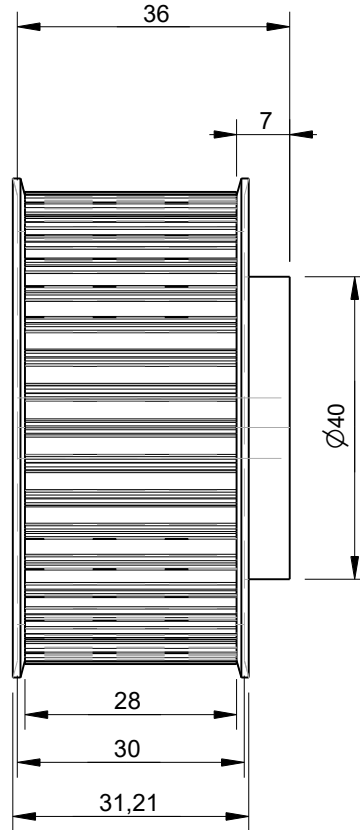
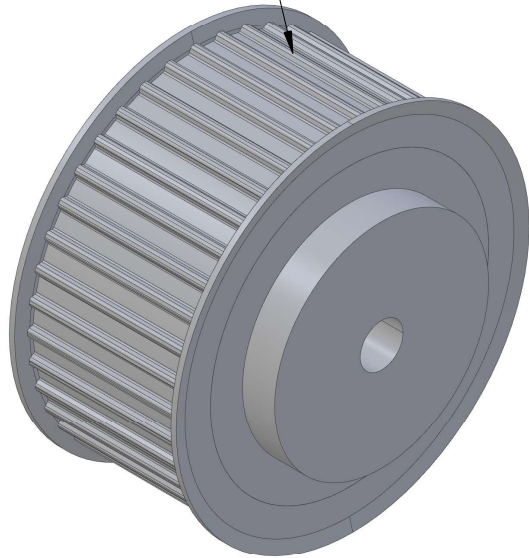


1	2	3	4	5	6
RevNo	Revision note			Date	Signature Checked

AT5 Pulley with 40 Teeth
Designed for use with
25mm wide belts



This AT5 pulley size has a bore of 8mm

Effective (Outer) Diameter	62.45mm
Pitch Diameter	63.65mm
Weight	0.28kg
With Flanges?	yes
Material	Aluminium
Units	mm
Tolerances	+/-0.1mm

Itemref	Quantity	Title/Name, designation, material, dimension etc			Article No./Reference	
Drawn by Kevin Damen	Checked by	Approved by - date	File name	Date 13-12-2023	Scale 1:1	

6423

www.damencnc.com

6423 AT5 Pulley 36-AT5 Z=40
for 25mm wide belts

Edition	Sheet 1 OF 1
---------	-----------------