

1

2

3

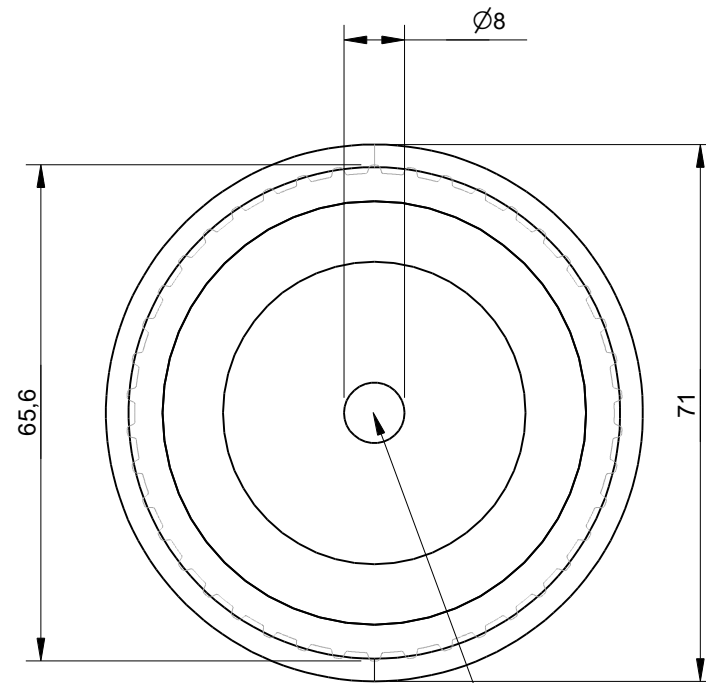
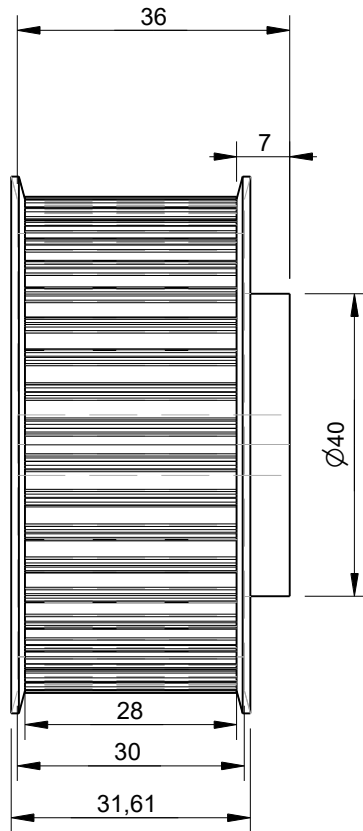
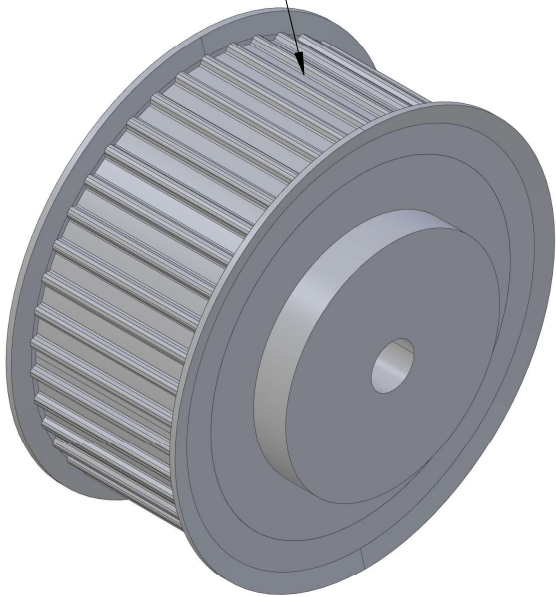
4

5

6

RevNo	Revision note		Date	Signature	Checked
-------	---------------	--	------	-----------	---------

AT5 Pulley with 42 Teeth  
Designed for use with  
25mm wide belts



This AT5 pulley size has a bore of 8mm

Effective (Outer) Diameter	65.6mm
Pitch Diameter	66.80mm
Weight	0.29kg
With Flanges?	yes
Material	Aluminium
Units	mm
Tolerances	+/-0.1mm

Itemref	Quantity	Title/Name, designation, material, dimension etc			Article No./Reference	
Drawn by Kevin Damen	Checked by	Approved by - date	File name	Date 12-12-2023	Scale 1:1	

**6424**

[www.damencnc.com](http://www.damencnc.com)

6424 AT5 Pulley 36-AT5 Z=42 for 25mm wide belts	Edition	Sheet 1 OF 1
--	---------	-----------------

1

2

3

4

5

6