

1

2

3

4

5

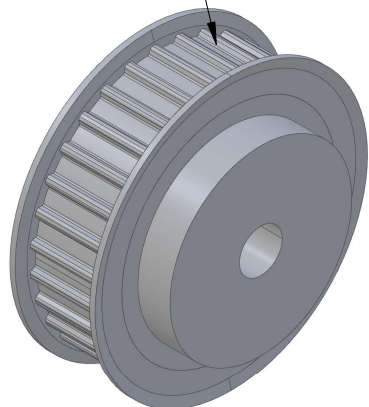
6

RevNo	Revision note		Date	Signature	Checked
-------	---------------	--	------	-----------	---------

A

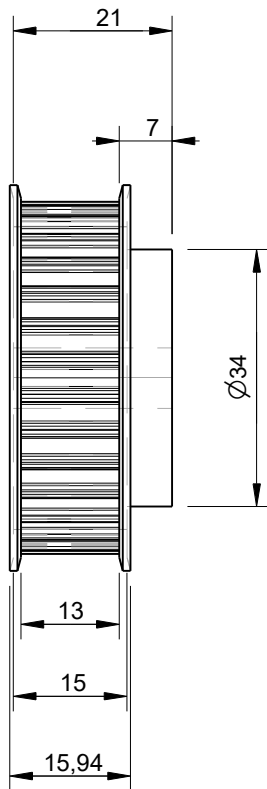
A

AT5 Pulley with 30 Teeth  
Designed for use with  
10mm wide belts



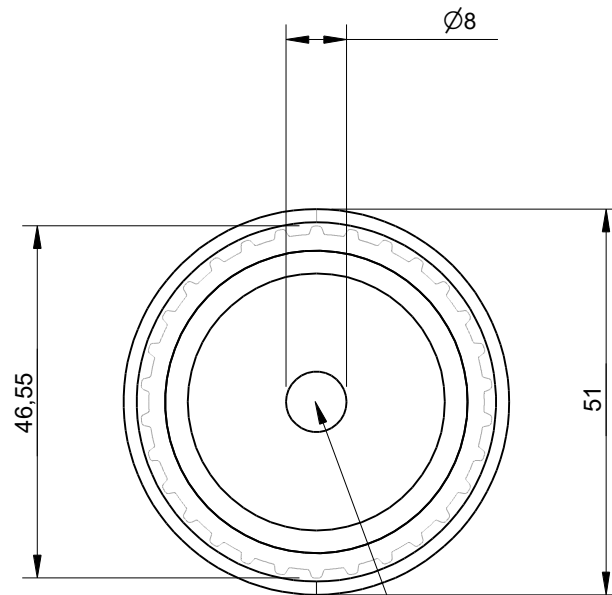
B

B



C

C



This AT5 pulley size  
has a bore of 8mm

D

D

Effective (Outer) Diameter	46.55mm
Pitch Diameter	47.75mm
Weight	0.07kg
With Flanges?	yes
Material	Aluminium
Units	mm
Tolerances	+/-0.1mm

Itemref	Quantity	Title/Name, designation, material, dimension etc	Article No./Reference		
Drawn by Kevin Damen	Checked by	Approved by - date	File name	Date 20-1-2024	Scale 1:1

**6573**

[www.damencnc.com](http://www.damencnc.com)

6573 AT5 Pulley 21-AT5 Z=30 for 10mm wide belts	Edition	Sheet 1 OF 1
--	---------	-----------------

1

2

3

4

5

6