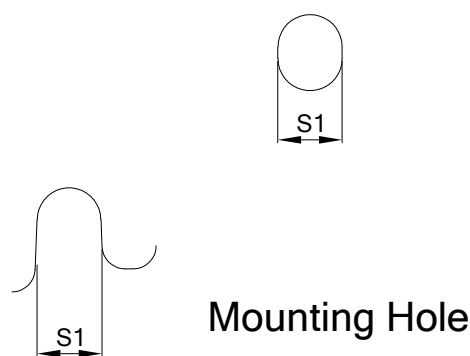
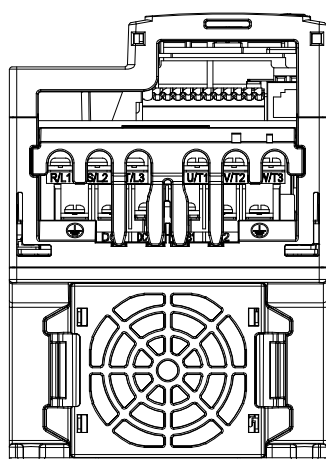
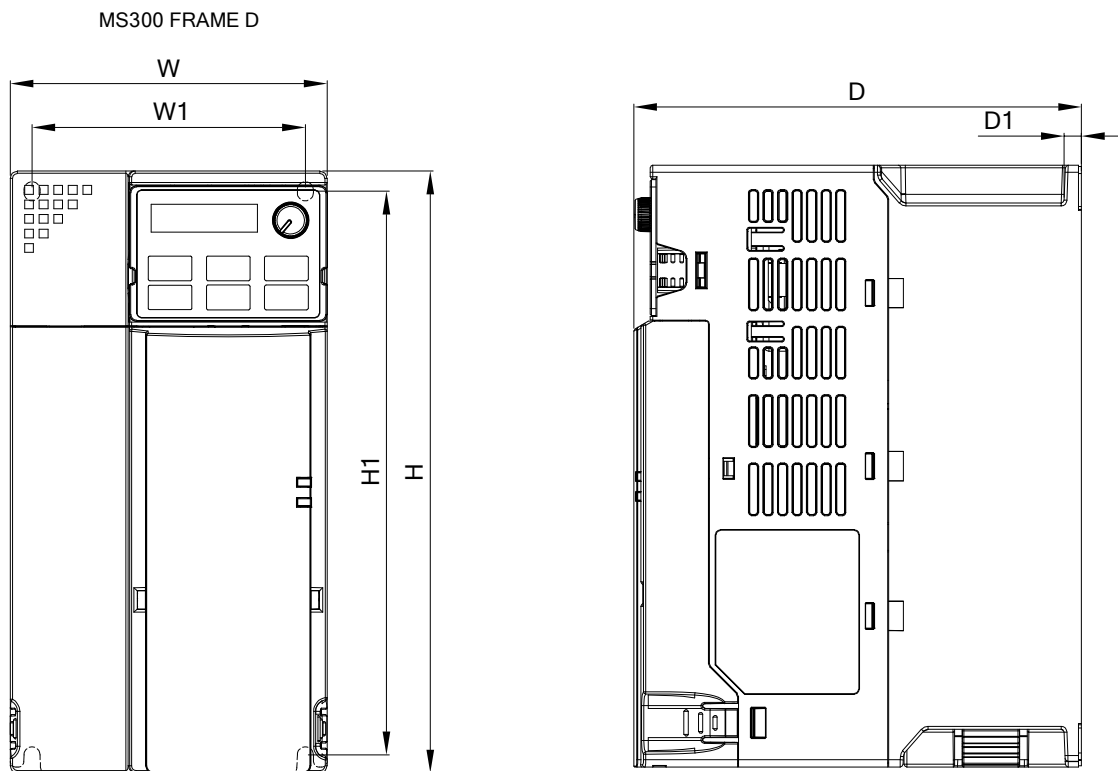


DRAWING_1



DIMENSION :

UNIT : mm [inch]

FRAME	W	W1	H	H1	D	D1	S1
D1	109.0[4.29]	94.0[3.70]	207.0[8.15]	193.8[7.63]	154.0[6.06]	6.0[0.24]	5.5[0.22]
D2	109.0[4.29]	94.0[3.70]	207.0[8.15]	193.8[7.63]	187.0[7.36]	6.0[0.24]	5.5[0.22]



台達電子工業股份有限公司
DELTA ELECTRONICS, INC.

THESE DRAWINGS AND SPECIFICATIONS ARE THE PROPERTY OF DELTA ELECTRONICS, INC. AND SHALL NOT BE REPRODUCED OR USED AS THE BASIS FOR THE MANUFACTURE OR SELL OF APPARATUSES OR DEVICES WITHOUT PERMISSION.

DOCUMENT NAME

VFD-MS300-D-PD

STANDARD**1.MODEL:****FRAME_D1:**

VFD25AMS23ANSAA
 VFD25AMS23ENSAA
 VFD13AMS43ANSAA
 VFD13AMS43ENSAA
 VFD17AMS43ANSAA
 VFD17AMS43ENSAA
 VFD25AMS23ANSHA
 VFD25AMS23ENSHA
 VFD13AMS43ANSHA
 VFD13AMS43ENSHA
 VFD17AMS43ANSHA
 VFD17AMS43ENSHA
 VFD9A9MS53ANSAA
 VFD12AMS53ANSAA

FRAME_D2:

VFD13AMS43AFSAA
 VFD17AMS43AFSAA
 VFD13AMS43AFSHA
 VFD17AMS43AFSHA

08	Add. Models: ANSGA & ANSAJ	2019/06/12
07	Add. Drawing_2a For GS20 Series	2019/04/10
00	FIRST ISSUE	2014/12/03
REV.	DESCRIPTION	DATE
DRAWN	Prandtl.Tsai	DESIGN HONGDA.LU