

1

2

3

4

5

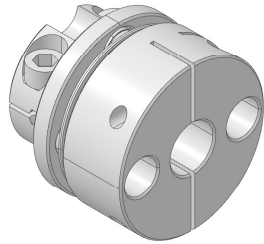
6

RevNo Revision note

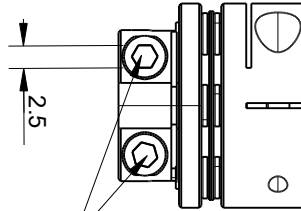
Date

Signature

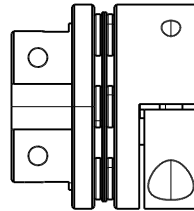
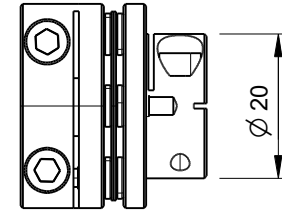
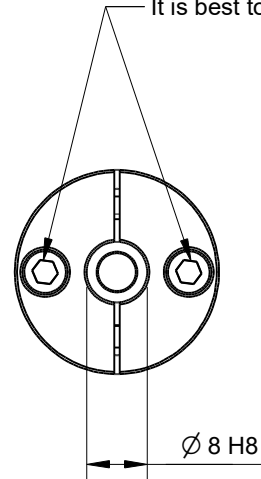
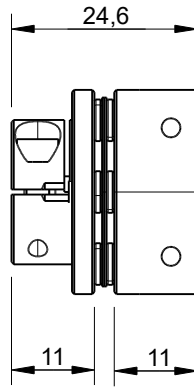
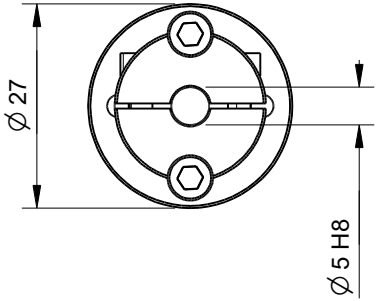
Checked



Max torque 1.9Nm



WARNING: Do not remove these bolts
These shaft couplers require a special alignment tool & procedure
It is best to order the shaft coupler with the correct bore on both sides



| | |
|------------------------|-------------------------------------|
| Rated Torque | 2 Nm |
| Max Torque | 4 Nm |
| Moment of Inertia | 3.1 x 10-6 kg.m2 |
| Max Eccentricity error | 0.02 mm |
| Max Angle error | 1° |
| Axial Shaft Play Error | +/-0.15mm |
| Units | mm |
| Tolerances | +/-0.1mm unless otherwise specified |

| Itemref | Quantity | Title/Name, designation, material, dimension etc | | | Article No./Reference | |
|-------------------------|----------|--|--------------------|-----------|-----------------------|--------------|
| Drawn by Kevin Damen | | Checked by | Approved by - date | File name | Date 8-6-2024 | Scale 1:1 |

6869

www.damencnc.com

| | | | |
|---|--|---------|-----------------|
| 6869 ShaftCoupler DCNC-D27-L25-B5.00-B8.00mm | | Edition | Sheet 1 OF 1 |
|---|--|---------|-----------------|

1

2

3

4

5

6