

1

2

3

4

5

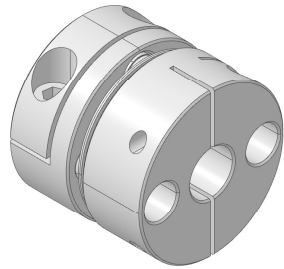
6

RevNo Revision note

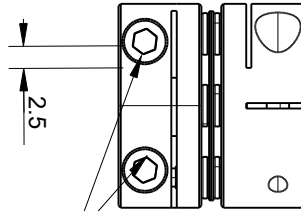
Date

Signature

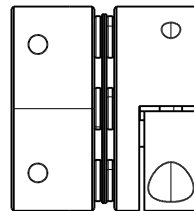
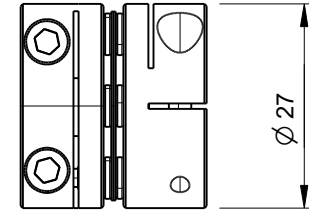
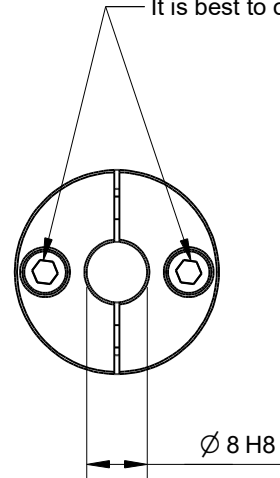
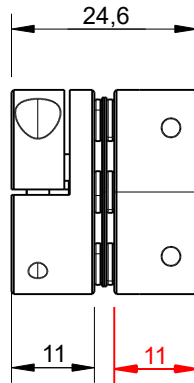
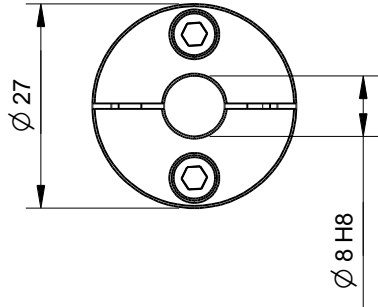
Checked



Max torque 1.9Nm



WARNING: Do not remove these bolts
These shaft couplers require a special alignment tool & procedure
It is best to order the shaft coupler with the correct bore on both sides



Rated Torque	2 Nm
Max Torque	4 Nm
Moment of Inertia	3.1 x 10-6 kg.m2
Max Eccentricity error	0.02 mm
Max Angle error	1°
Axial Shaft Play Error	+/-0.15mm
Units	mm
Tolerances	+/-0.1mm unless otherwise specified

Itemref	Quantity	Title/Name, designation, material, dimension etc			Article No./Reference	
Drawn by Kevin Damen		Checked by	Approved by - date	File name	Date 8-6-2024	Scale 1:1

6873

www.damencnc.com

6870 ShaftCoupler DCNC-D27-L25-B8.00-B8.00mm		Edition	Sheet 1 OF 1
---	--	---------	-----------------

1

2

3

4

5

6