

1

2

3

4

5

6

RevNo Revision note

Date Signature Checked

A

A

B

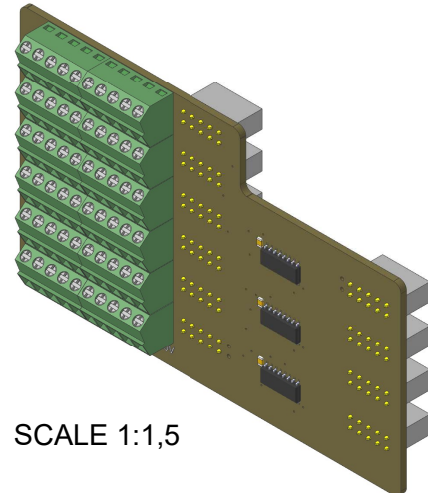
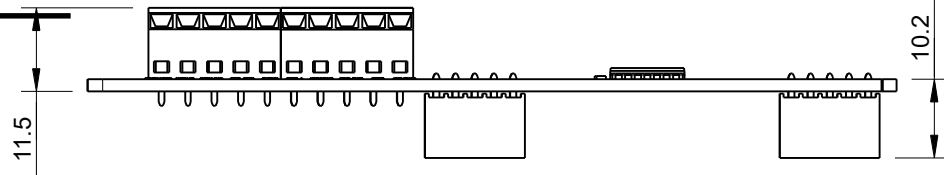
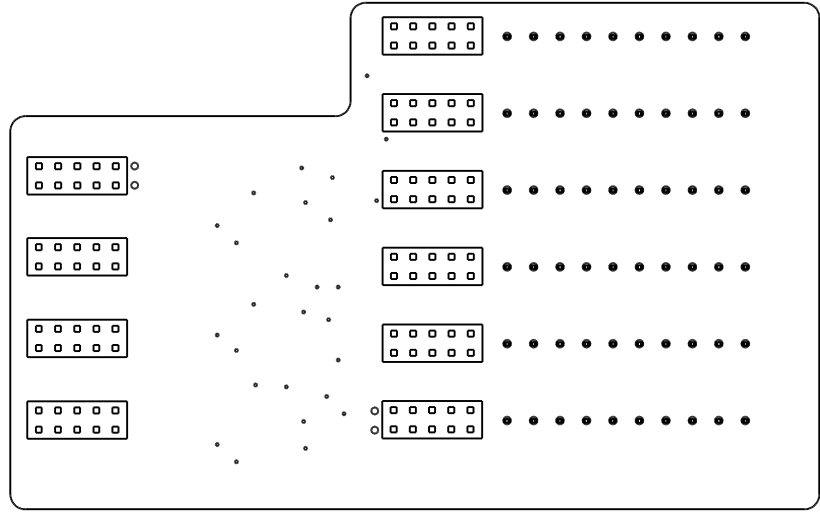
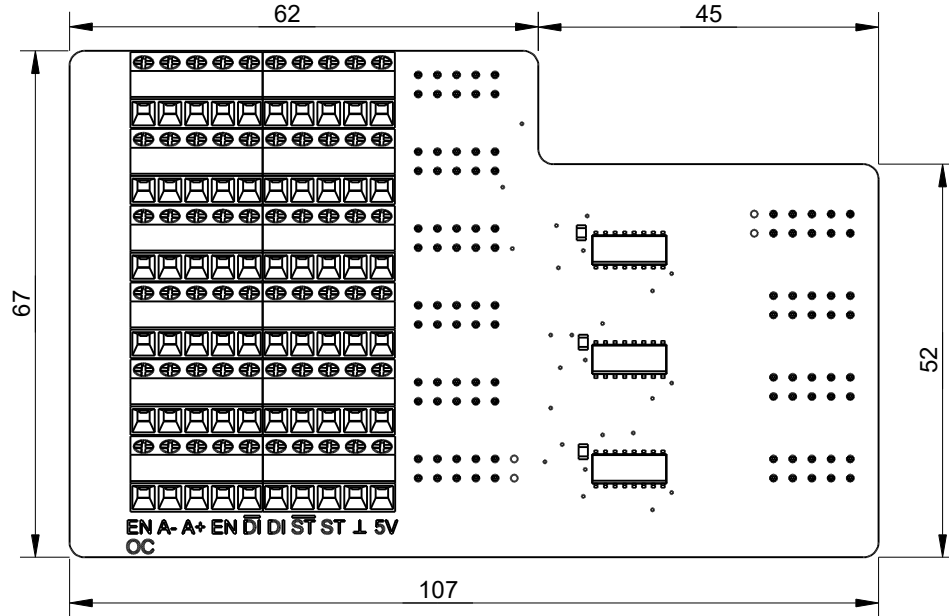
B

C

C

D

D



SCALE 1:1,5

Units: mm Tolerances +/- 0.2mm

Name On PCB	Description
EN OC	Enable Open Collector (switches to ground, max 40V/100mA)
A-	Alarm - - Input for Driver Alarm Signal
A+	Alarm + (MAX 24VDC) - Input for Driver Alarm Signal
EN	Enable (switches to ground, max 5V/15mA) NPN
DI/	Line Driver for Direction Signal - Minus (-) (Direction is also known as Sign)
DI	Line Driver for Direction Signal - Plus (+) (Direction is also known as Sign)
ST/	Line Driver for Step Signal - Minus (-) (Step is also known as Pulse)
ST	Line Driver for Step Signal - Plus (+) (Step is also known as Pulse)
⊥	GND Ground
5V	+5VDC Internal CPU Powersupply (500mA max)

Itemref	Quantity	Title/Name, designation, material, dimension etc	Article No./Reference
Drawn by Kevin Damen	Checked by	Approved by - date	File name Date 11-6-2024
		Scale 1:1	

# 6876

## www.damencnc.com

6876 CNC760 Line driver axis breakout	Edition	Sheet 1 OF 1
---------------------------------------	---------	-----------------

1

2

3

4

5

6