

1

2

3

4

5

6

RevNo	Revision note	Date	Signature	Checked
-------	---------------	------	-----------	---------

A

A

B

B

C

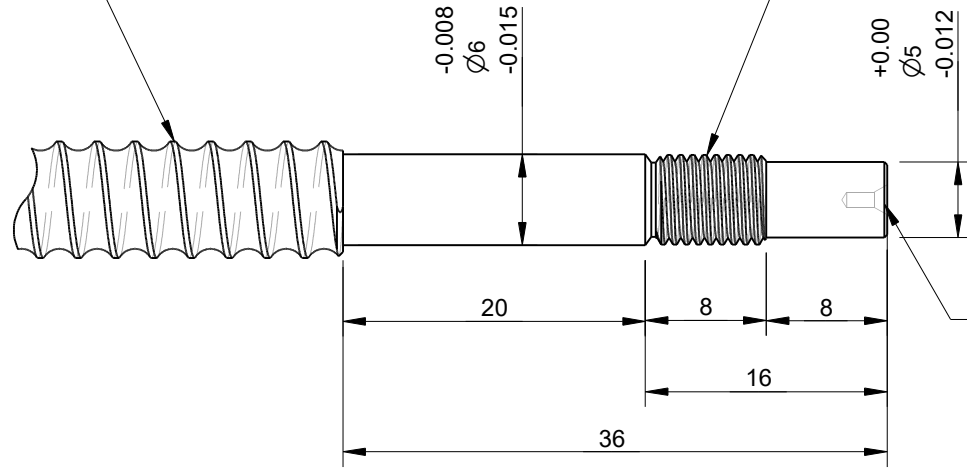
C

D

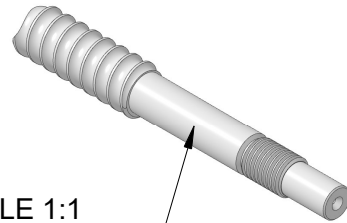
D

Suitable for  $\varnothing 8$ mm and  $\varnothing 10$ mm ballscrews

M6x0.75 Metric Fine Thread



DIN333 Form A Centre Drill hole  
Not always present. This is used for manufacturing purposes only.



SCALE 1:1

Suitable for Fixed bearings  
EK06  
FK06  
FKA06

Itemref	Quantity	Title/Name, designation, material, dimension etc			Article No./Reference	
Drawn by Kevin Damen	Checked by Rutger Schuit	Approved by - date 21-6-2024	File name	Date 29-5-2024	Scale 2:1	

Units: mm  
Tolerances: +/- 0.1mm unless otherwise specified  
WARNING: Ballscrew not included in the delivery

# 8106

[www.damencnc.com](http://www.damencnc.com)

8106 EK-FK-FKA06 Ballscrew End Machinig Fixed side	Edition	Sheet 1 OF 1
---	---------	-----------------

1

2

3

4

5

6